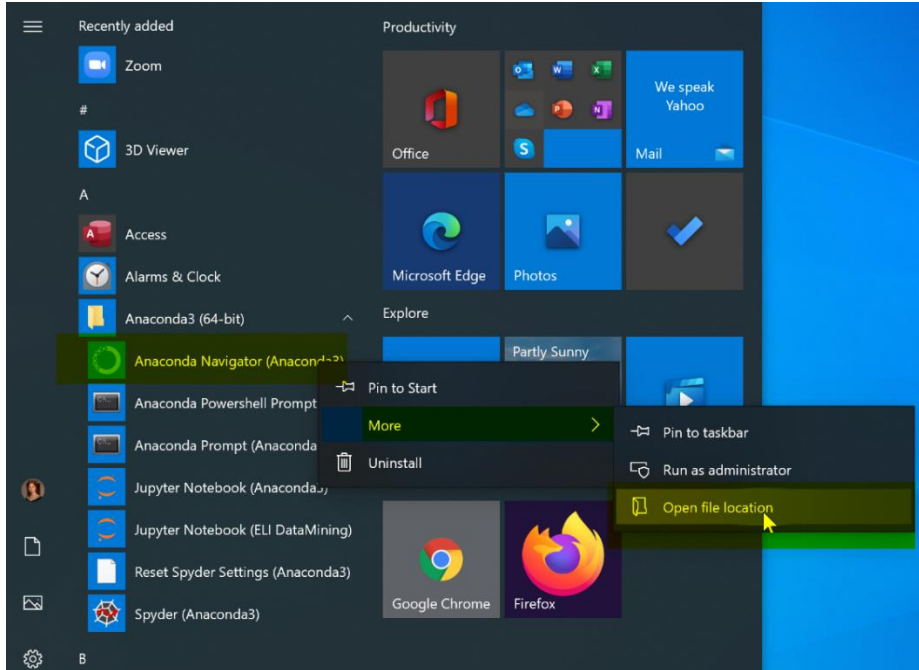


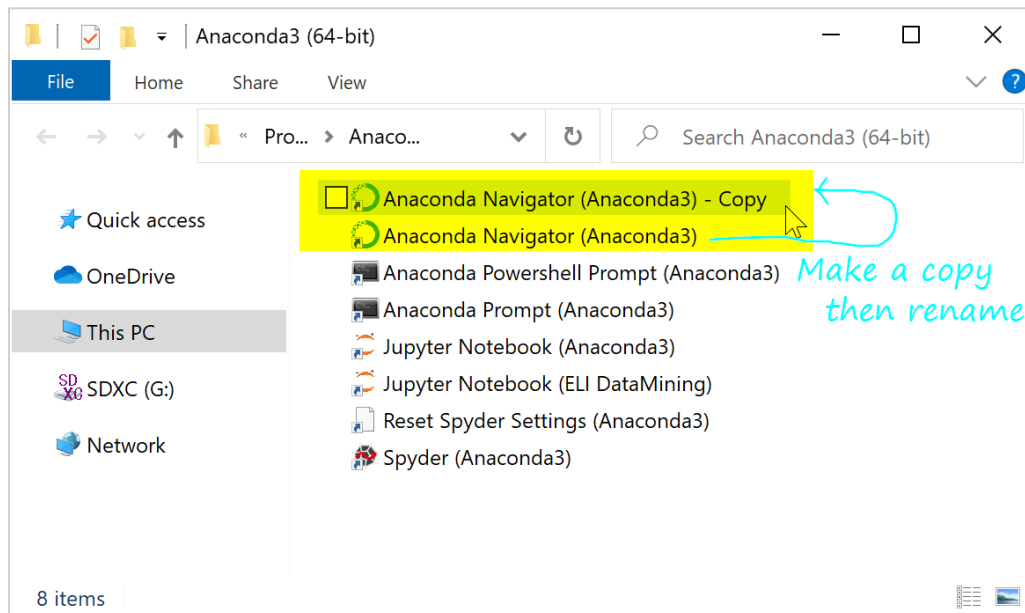
Goal: Anaconda Python does come with IDLE but does not provide a handy app shortcut in Windows 10/11 start menu. So, we'll make one ourselves.

Overall process: make a copy of an existing Anaconda shortcut, then modify it as an IDLE shortcut.

Step 1. Find your Anaconda shortcuts in START menu. Right click "Anaconda Navigator", open up the folder where they are stored.

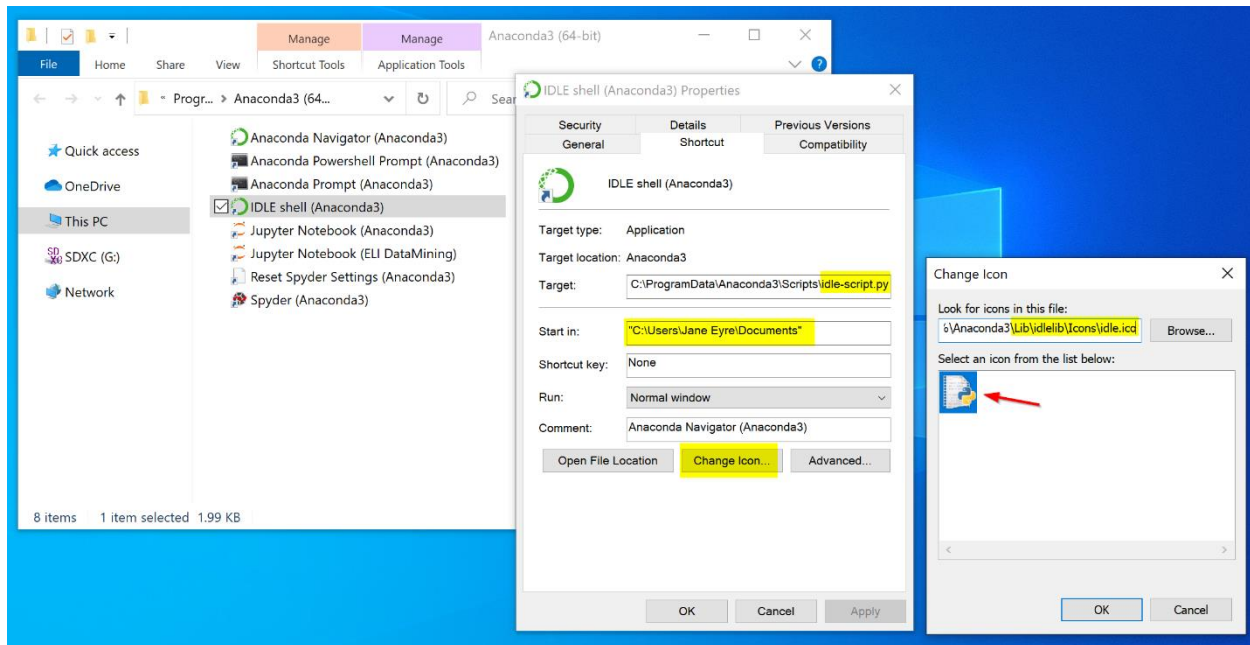


Step 2. Make a copy of your "Anaconda Navigator" shortcut. Then, rename it "IDLE shell (Anaconda3)".



Step 3. Right-click on the copy shortcut and bring up “Properties”. Change three things:

- Target:** Scroll all the way to the end. Then, replace the last part “anaconda-navigator-script.py” with “idle-script.py” so the shortcut points to the correct app.
- Start-in:** Change this to your own script folder, say “C:\Users\narae\Documents\ling1330”. This is where you will store all your Python scripts for this course. Make a folder if you don’t have one already. If you’re unsure, leave it as-is.
- Click **“Change Icon”** button. Replace the last part “Menu\anaconda-navigator.ico” with “Lib\idlelib\Icons\idle.ico” This part only affects the shortcut’s appearance, so it’s optional.



Step 4. All done! You now have a new shortcut that launches Anaconda’s IDLE shell.

