



# Climate Science Workshop Series

University of Pittsburgh

27-28 February 2015

---

## 27 February **Uncertainty in Climate Modeling**

- *Workshop*

Cathedral of Learning  
Philosophy Department  
9:00-9:30AM  
*Breakfast*

Cathedral of Learning, Room 232  
9:30-11:00AM

**Ana Lopez** (Oxford) -  
*Uncertainties in Climate models' projections:  
sources and their impact in the use of information  
for decision support*

11:15AM-12:45PM

**Eric Winsberg** (U. South Florida) -  
*Values and uncertainties in the predictions of  
global climate models*

- *55th Annual Lecture Series of the  
Center for Philosophy of Science*

Center for Philosophy of Science  
3:30-5:30PM

**Charlotte Werndl** (U. Salzburg)-  
*On Defining Climate and Climate Change*

---

## 28 February **Climate Modeling and Public Policy**

- *Workshop*

University Ballroom A  
9:15-9:30AM  
*Introduction*

9:30-11:00AM

**Eric Winsberg** (U. South Florida) -  
*The adventures of climate science in the sweet land  
of idle arguments*

11:15AM-12:45PM

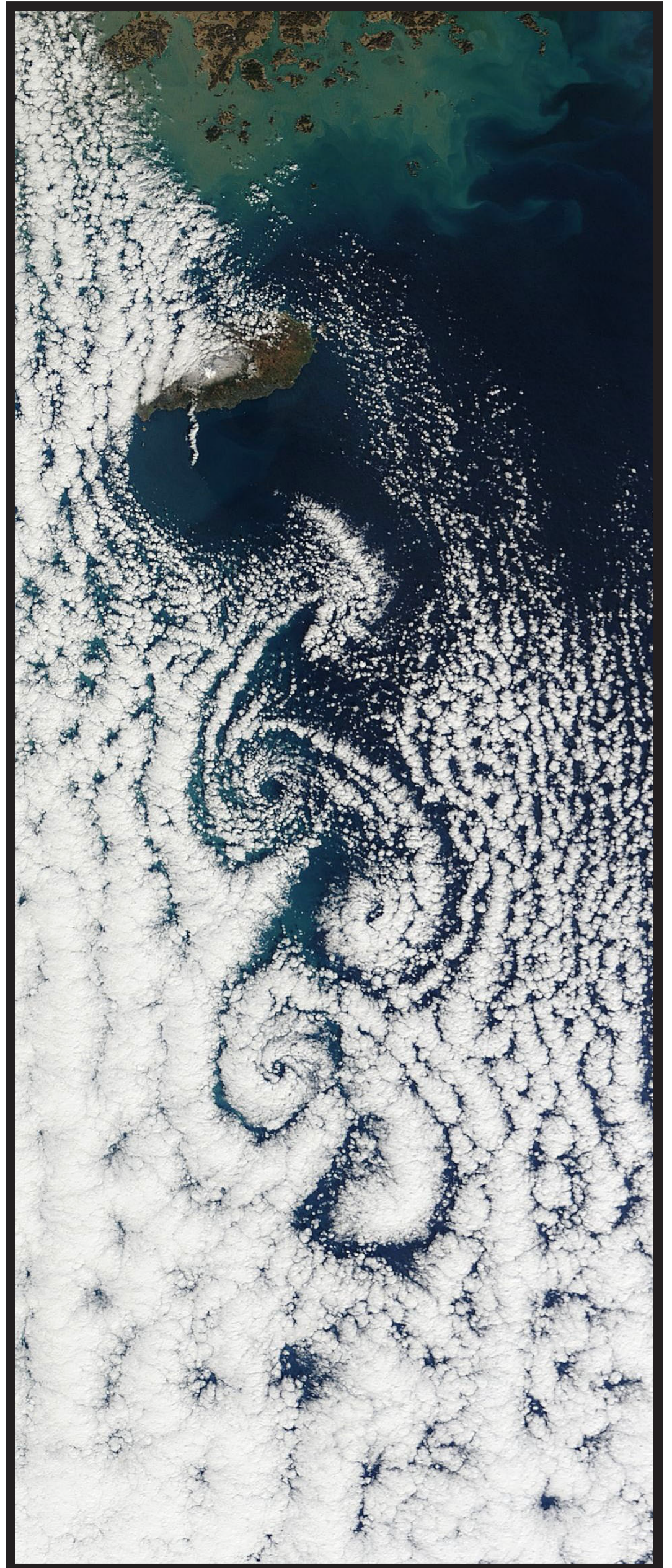
**Julie Jebeile** (Paris) -  
*Communicating About Climate Change  
Uncertainties*

3:00-4:30PM

**Charlotte Werndl** (U. Salzburg) -  
*Climate models and model selection theory: the need  
for a more nuanced view on use-novelty*

4:45-6:15PM

**Mathias Frish** (U. Maryland) -  
*Modeling Climate Policies: A Critical Look at  
Integrated Assessment Models*



*Organizers:* Marina Baldissera Pacchetti, Elay Shech, Giovanni Valente  
*Funded by:* Center for Philosophy of Science, Office of the Provost,  
Philosophy Department (Rescher Fund)