

9

IMPRESS PRESENTATIONS

Creating slide shows and related teaching materials

LEARNING OUTCOMES

This lesson introduces you to those features of *LibreOffice Impress* that are particularly valuable in the teaching and learning environment. You will learn how to use *Impress* to capture your ideas in outline form and convert those ideas into multimedia presentations. You will also learn how to use the application to create your own presentations both from scratch and with the help of one of the *Impress* Wizards.

Most people think of a slide show as a way of presenting a series of still images or photographs using a slide projector. If you think about it, however, a slide does not have to be a still image; using *Impress* it can also be an audio or video clip. For that matter, a slide does not have to be even a picture; it can also be text, an outline of ideas, whatever you want.

Impress provides an easy-to-use multimedia presentation production system, which you will no doubt enjoy learning and which you and your students will find useful for individual or group projects of all kinds.

In the various courses that you take as an Education major you learn how to design curricula, with lesson plans and unit plans. You also learn methodologies for effective teaching. The better the teacher you are, the more *Impress* will empower you in your work.

Here, then, are the topics that will be covered in this lesson:

- introductory thoughts about presentations;
- *Impress* at work;
- building the presentation;
- adding bells and whistles to the presentation;
- printing presentation handouts.

A caveat before you begin:

In the earlier tutorials for *LibreOffice*, the steps to accomplish the tasks assigned have been rather detailed. This time, however, the directions will be less specific, especially in the latter half of the lesson, because *Impress* is a program you can figure out by playing with it. You'll find that you'll soon become confident about how to design and develop high quality multimedia slide presentations. So relax, and have fun!

9.1 INTRODUCTORY THOUGHTS ABOUT PRESENTATIONS

Making a successful—well-designed, content-rich, pedagogically-sound—*Impress* presentation requires forethought and advance preparation. It's rather like what good cooks or chefs do before starting to cook a delicious dish of food. They read the recipe, make sure they have all the ingredients they need, gather all the ingredients together—the raw food such as vegetables and eggs and milk and wine and spices and other flavoring—what they call the *mise en place*. They make sure they have all the tools they need to do the job.

Good cooks don't start cooking till they're good and ready.

In the same way, you have to get your thoughts together, know what you're going to talk about, and have your audio-visual material gathered together in one place (*mise en place*) so that when you come to create the presentation, it's a snap.

A good presentation, like a term paper, is usually based on an outline, such as is illustrated in Fig. 9.1.

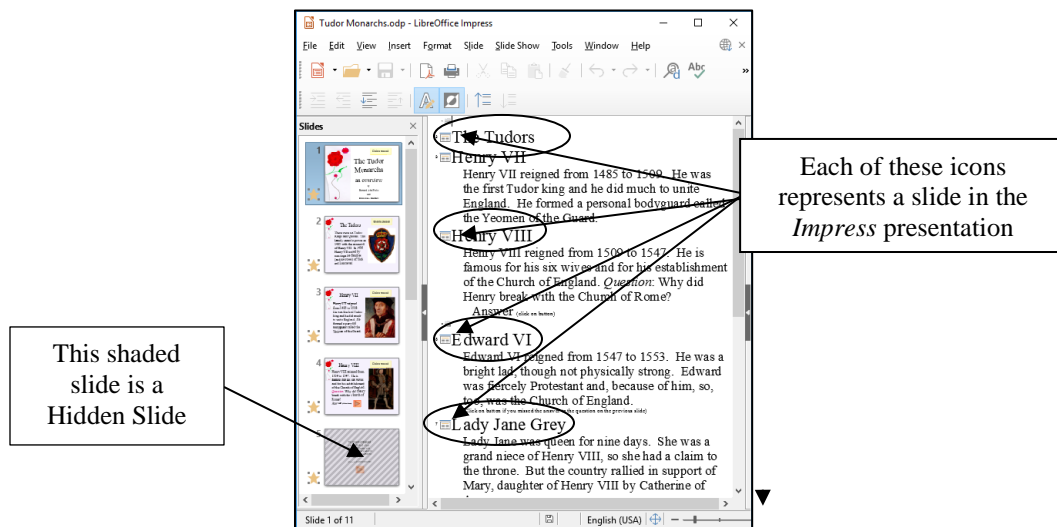


Fig. 9.1 Outline for the Tudor Monarchs presentation

You see on the left an outline of the text for each slide in the Tudor Monarchs presentation. Think of the titles and text for each slide as an outline you would have made for a high school or college paper. Similar, right? This is why the outlining tool is built into *Impress*—to help you plan.

Remember the golden rules of successful design: Rule 1—Plan; Rule 2—Plan; Rule 3—Plan! These golden rules apply whether you are designing a term paper, an audio-visual aid, a class outing, or a class syllabus and schedule.

You might begin with a brainstorming session to help you get an outline. During brainstorming, members of the group would come up with as many ideas as possible related to the topic of the project. Nobody's ideas are rejected in the early stages so as to encourage a fertile flow of useful suggestions.

The result of the brainstorming session might be a somewhat disorganized list of ideas. This list might have been entered directly into the computer during the brainstorming session, or it might have been collected on a blackboard or flip chart. Before changing the list into outline form you would re-organize it so that the ideas flowed naturally and logically from one to the other.

Along the way you might toss out some of the ideas for one reason or another. Eventually you'll have a working list which would end up as an outline, perhaps in a word processor document.

9.2 IMPRESS AT WORK

Let's see these ideas and others at work by looking at an example of an Impress presentation.

Turn on your computer, open **Libreoffice** then click on **Open File** and, in the **Open dialog box**, navigate to your **disk drive > Work Files for LibreOffice > Impress Files** folder and **double click** to open the **Tudor Monarchs** presentation

Fig. 9.2 shows the Tudor Monarchs presentation in *Normal View* as it probably appears on your screen right after you open the document.

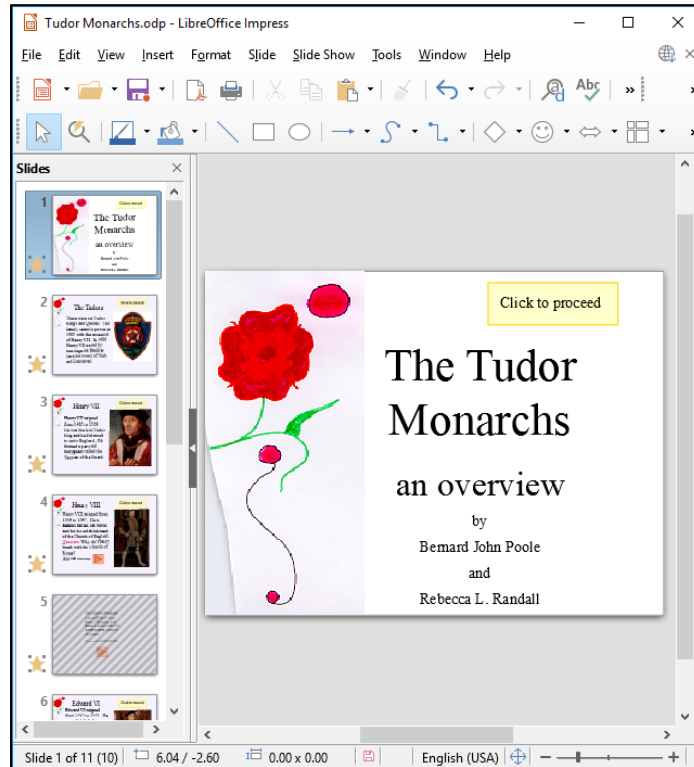


Fig. 9.2 The Tudor Monarchs presentation

If you do not have *Normal View* showing on your screen, this is simple enough to fix.

In the **View** menu select **Normal**

Different ways to view the slides in your presentation

Normal view

This is the view you see illustrated in Fig. 9.2 above. It is the one you'll use most of the time while you're actually putting information on each slide. In this view, there is the left hand frame where you see thumbnails of all your slides in a scroll box. In the center of the window you have the slide you are actually working on—the active slide. Then, over in the right hand frame you have the Properties Pane (not shown in Fig. 9.2 above), where you'll find more tools to help you to develop your presentation.

Outline View

The *Outline View* (Fig. 9.3 next page) lets you see just the *text* on each slide. You can use the Outline View to map out/plan the content of your show before you add graphics and colors and

backgrounds and so forth. Fig. 9.3 shows the Outline View for the Tudor Monarchs presentation. Compare it with the *Normal View* shown in Fig. 9.2 above.

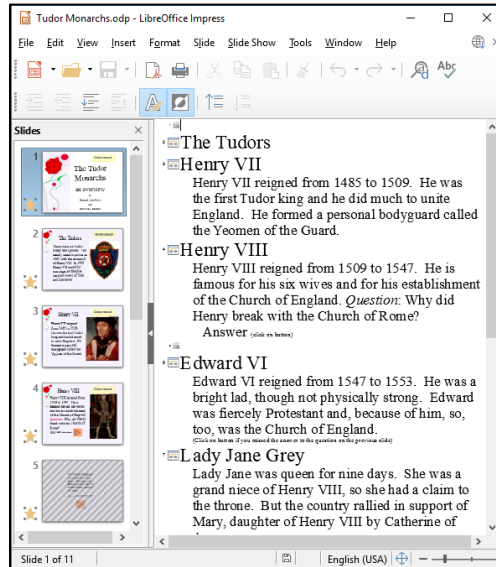


Fig. 9.3 Outline View of the Tudor Monarchs presentation

Notes View

The Notes View is especially useful if you want to amplify the content of each slide, either for your own use as the presenter, or for your students or for whoever is in your audience who would like more information than is on each actual slide. In the Notes View you are presented with a smaller version of each slide, one by one, with ample space to add extra textual notes pertaining to the content of each slide, as illustrated in Fig. 9.4.

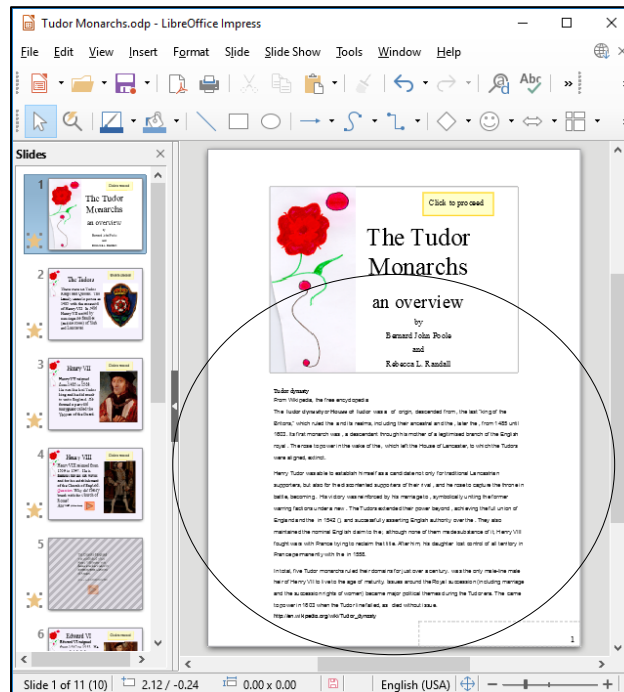


Fig. 9.4 The *Impress* Notes View showing the supplementary notes for Slide One

Handout Master View

Anyone who gives a presentation is, in a way, a teacher. The people listening to him or her are, in a way, students hoping to learn something they didn't know before. One of the problems with being a student is that it can be difficult to recall what the teacher is trying to get across. Good teachers/presenters give their audience the opportunity to take away at least a summary of what they have had to say. Hence handouts; and *LibreOffice* makes printed (hardcopy) handouts a snap.

Fig. 9.5 illustrates the *Impress* Printed Handout options.

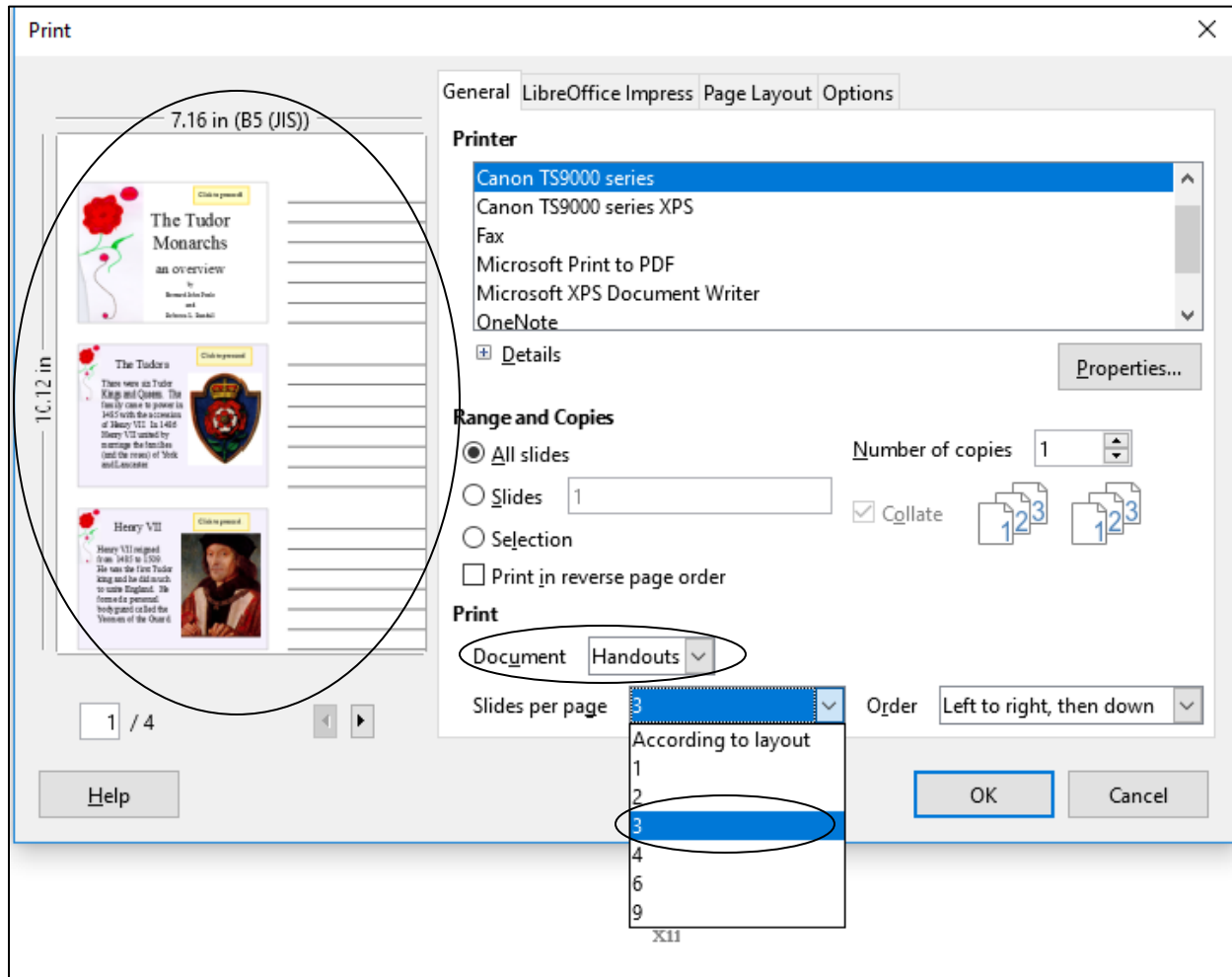


Fig. 9.5 The *Impress* Print (Handouts) dialog box

Handouts are one way to serve the purpose of providing a textual summary to go along with what should be attractive, eye-catching, thought-provoking slides. The *Impress* Handout View makes it easy to format and print (or e-share through email, Facebook, and myriad other online social media) the *Impress* presentation that you have so carefully designed and produced. A useful final slide in an *Impress* presentation will provide a web link to the set of handouts that go along with a presentation. Your audience or students will be very grateful for that.

The best presentations, however, are NOT slide intensive! In other words, if you are teaching for 40 to 50 minutes, you shouldn't need more than half a dozen slides. The worst thing a teacher can do is fill slides with text and then just read from the slides. That's called "Death by Impress."

Slide Sorter view

This is the view you see illustrated in Fig. 9.6 and it is the one you'll find most useful when you want to get an overview of your show while you're working on it, since you'll be able to see most, if not all, of your slides laid out for you on one screen or page.

You also can easily move your slides around by using the mouse to slide them into place, changing the order to suit your purposes. This is why it's called the Slide Sorter view.

Let's further check out the Slide Sorter view now.

In the **View** menu select **Slide Sorter** view (Fig. 9.6)

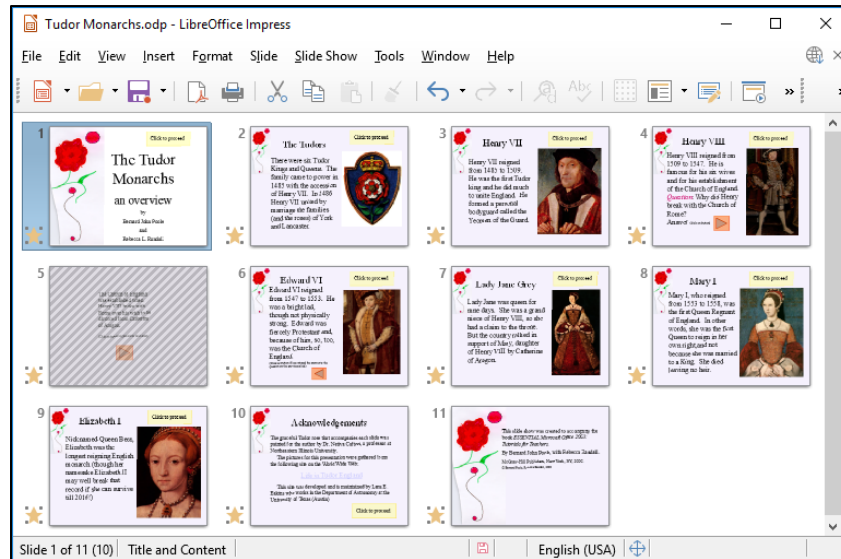


Fig. 9.6 The Slide Sorter View of the Presentation

Take a look at the Slide Sorter View window that is presented to you (much the same as Fig. 9.6 above, though your screen may be a different width, so the slides may be arranged differently across the page). The presentation demonstrates some of the basic features of *Impress*. By the end of this lesson you will be able to build your own presentations along the same lines.

Features to look out for in the demonstration presentation

It's time you checked out the *Impress* presentation about the Tudor Kings and Queens of England.

In the **View** menu select **Normal View**, then in the **Slide Show** menu select **Start from first slide**

While you click your way through the Tudor Monarchs presentation, look out for the following *Impress* features that have been used in the creation of the Tudor Monarchs slide show.

Transition effects and animations

The transition effects from one slide to another and the text animations (which determine how the text will arrive on each slide) have been set at *random* for the demonstration. This is to give you some idea of the variety of transitions and animations you can use in *Impress*. But this is not necessarily a good thing to do. Normally you would *not* want to use many, if any, different transitions and animations since it might distract from the impact you are trying to make. A good designer homes in on a style that he or she likes best for a particular theme and tends to stay with it for all the slides in the show.

Inserting clip art

LibreOffice offers a database of *clip art* images and sounds/audio on a wide range of topics. This is available to all the software in the *LibreOffice* suite.

In the **View** menu select **Gallery**, then check out all the **Themes** by clicking on the list on the **right side** of the *Impress* window

Fig. 9.7 illustrates the Gallery from which you can select clip art to insert onto your slides.

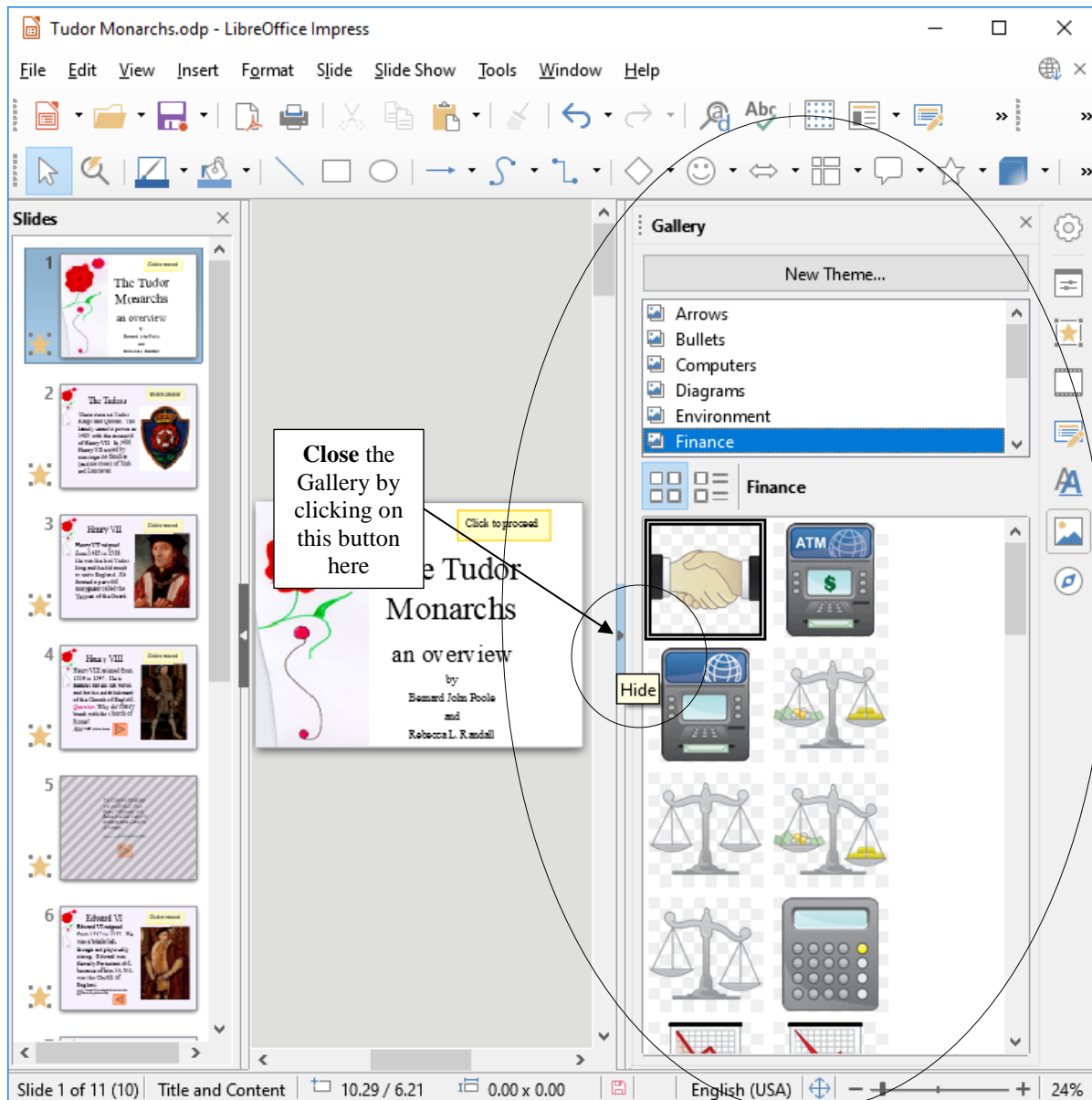


Fig. 9.7 Ribbon for inserting images, illustrations, and other media

You can download clip art, photographs, sound files, video clips and other media from a file you have saved on disk, or from collections available free of charge on the Web. Or you can bring onto a slide all kinds of charts and tables from other *LibreOffice* programs such as *Writer* or *Calc*.

You can also scan pictures directly onto a slide. So, if you have a scanner connected to your computer, you're in business.

If you're looking for multimedia material to accompany your slides, the Web is the place to go. Companies, universities, schools, and individuals, especially teachers, are creating and making available excellent multimedia materials. These materials are available, mostly free of charge, from websites such as *flickr.com*, *youtube.com*, and so forth.

After you've checked out the Gallery, click on the **button** to the **center left** of the **Gallery** to close it

Impress makes it easy to incorporate such material into presentations, with or without accompanying text. Remember though: YOU **MUST ALWAYS** GIVE CREDIT FOR ANYTHING YOU ACCESS ONLINE.

Buttons, Slide Controls and Hidden Slides

Notice the use of *buttons* to allow the user to control movement through the slides, thus making slideshows both interactive and non-linear—in other words, the user has control over the sequencing of the slides.

For example, in the Tudor Monarchs slide show there is a *Hidden Slide* (slide #5) which is only able to be seen if, on slide #4, you click on the orange button to see the answer to the question posed there. Let's check this out.

If you are actually viewing the slide show, hit the **Esc**(ape) key on the keyboard to **exit** the slide show then, in the **Slides menu** on the **left** of the *Impress* window, click on **Slide 4** to make it the **active slide**

In the **Slide Show menu** click on **Start from current Slide**

Slide 4 is showing on your full screen as an active slide in the show.

Now, read the text on the slide, but **DON'T** click on the **orange button** towards the bottom of the slide; instead click on the **yellow button** at the top of the slide to **proceed** to the next slide

Notice that the presentation skips straight to Slide 6. Fortunately, there's a button on slide 6 which takes you back to Slide 5 if you don't already know the answer to the question.

So, you can create interesting *interactive* learning materials using *Impress*. Lesson 10 will help you learn more about interactive presentations such as this. Your students, too, will have a lot of fun using *Impress* to develop projects of all kinds for every subject under the sun.

Let's continue checking out a couple of other *Impress* features.

Timing and other considerations

Fig. 9.6 on page 306 shows the *Slide Sorter View* of the presentation. Fig. 9.8 on the next page also highlights the range of transitions you can choose, how fast you want the transition to occur, whether you want a sound to accompany the transition from slide to slide, and so forth.

Notice, in the *Slide Transition pane* on the right-hand side of the Slide Sorter window, that the transition (*Random Bars Transition*) is set to *Fast*, with an accompanying sound called *Apert*.

Each slide will advance automatically after *15 seconds*, unless the user clicks the mouse on the "Click to proceed" button on each slide, in which case the slide will advance right away.

Under normal circumstances, 15 seconds should be more than enough time for anyone to read and absorb the data on slides such as those in the Tudor Monarchs presentation. So, you might think 15 seconds is too long to hold the user's attention. Won't they get antsy waiting for the next slide?

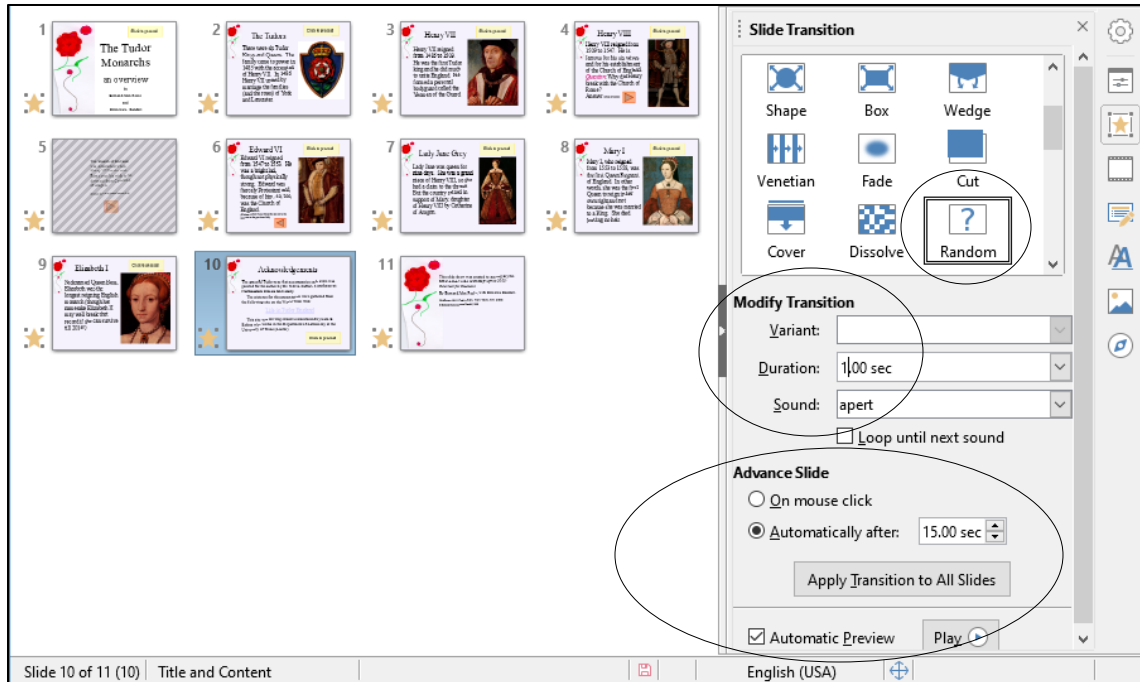


Fig. 9.8 The Slide Sorter View showing the Slide Transition settings

Well, as you noticed when you reviewed the slide show, there is a button which the user can click on to control when to proceed to the next slide. The speed at which our minds absorb data varies enormously from person to person. Thus, by allowing a generous amount of time, along with user control, you're allowing each individual user the freedom to proceed at his or her own pace.

You always should design teaching materials and lessons in such a way as to address *individual* student needs. The timing features of *Impress* allow for this.

Acknowledgements: Always give credit where credit is due

The last slides in any presentation, just as the last item in a term paper or the credits that run at the end of a movie, should usually be your list of sources cited or used—your Acknowledgements and Credits slides (Fig. 9.9).

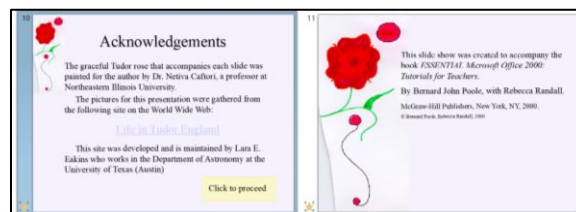


Fig. 9.9 The Acknowledgements and Credits slides

So... If you haven't already done so, in the **Slide Show** menu select **Start from first slide**

Click your way through the presentation now (click on the **Buttons** on each slide to proceed to the next slide)

The slides have been timed to allow the user (right now, that's you) to easily view and read what is on each slide without feeling rushed. If you want the slides to proceed at a faster pace, simply click on the *Click to proceed* button on each slide.

When you have finished reviewing the **Tudor Monarchs** slide show, **exit** the show by **hitting** the **Esc**(ape) button in the **top left** corner of the keyboard

So much for an overview of *Impress*. No doubt you are anxious to start creating your own presentation. The next section will help you do just that.

Close the **Tudor Monarchs** presentation when you are ready to continue

9.3 BUILDING A NEW PRESENTATION

Preparation of the outline

You are going to prepare a simple outline, which will give you the experience to prepare your own outlines when you develop your own *Impress* presentations.

It's tempting to just barrel along into a new document or database, whether in *Writer*, *Impress*, or *Base*, like someone tempting fate at Niagara Falls! But you should resist doing so at all costs because you'll save yourself no end of time in the long run if you *carefully plan* what you want to do. You really have to think ahead if you want to get where you want to go. Otherwise, there's no telling where you'll end up!

So whenever you're preparing a new *Impress* presentation, take your time. Think about it; gather your data; *brainstorm, with yourself at least and with friends if necessary*. Don't just blunder along, OK? So let's begin.

In the top level menu of *LibreOffice* applications, select **Impress Presentation** to **open** a new *Impress* presentation

You're presented with a dialog box which prompts you to **Select a Template**, but you don't want to do that yet, so click on the **Cancel** button

Immediately, go to **File > Save As**, navigate (**Browse**) on your computer to your **disk drive > Work Files for LibreOffice > Data Files** folder and **Create** a new folder called **Impress Documents**

Open the **Impress Documents** folder, name the new presentation **Screenbeans**, and click on **Save**

When you first open a new, blank presentation in *Impress*, the program presents you with the *Normal View* (Fig. 9.10).

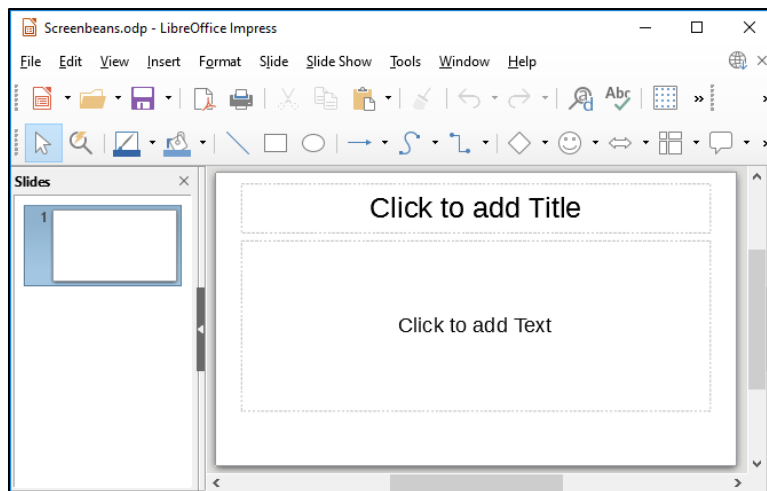


Fig. 9.10 New Presentation window in *Normal View*

The first slide, by default, is in the *Title Slide layout*. This is because you would normally want to start out a presentation with a slide that displays the title of your show, along with sub titles such as your name and so forth. You don't *have* to use this slide layout, of course.

Impress provides a set of *slide layout templates* from which you can choose when you are working on a slide, including one layout which is blank. The *Blank Slide* template allows you to create slides from scratch, entirely of your own design.

In the **View** menu select **Slide Layout**

Impress now opens up the *Slide Layout Properties* pane on the right side of the window (Fig. 9.11).

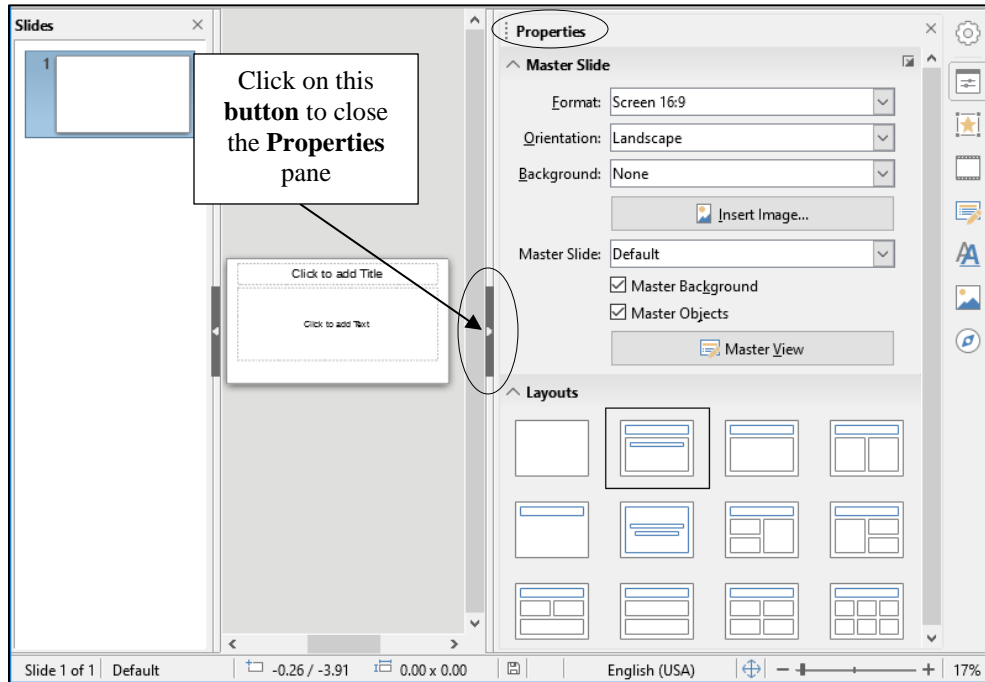


Fig. 9.11 The Slide Layout *Properties* pane

Let's take a look at these different Slide Layouts (Fig. 9.12).

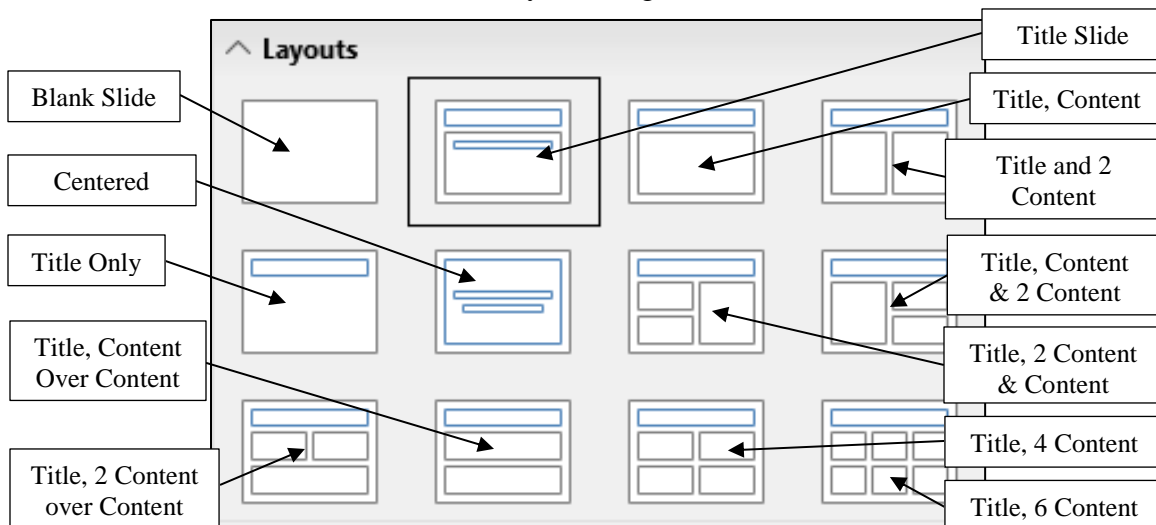


Fig. 9.12 Slide Layouts (annotated)

Click on each of the **Slide Layouts** to check them out in **Normal View**

After you've checked out the various slide layouts, click on the **Title Slide layout** to select it as the **first slide** in your presentation, then click on the **button** immediately **to the left of the slide layouts** (see Fig. 9.12 above) to **close the Layout Properties** pane

The Title slide is presented in the *Normal View* (Fig. 9.13).

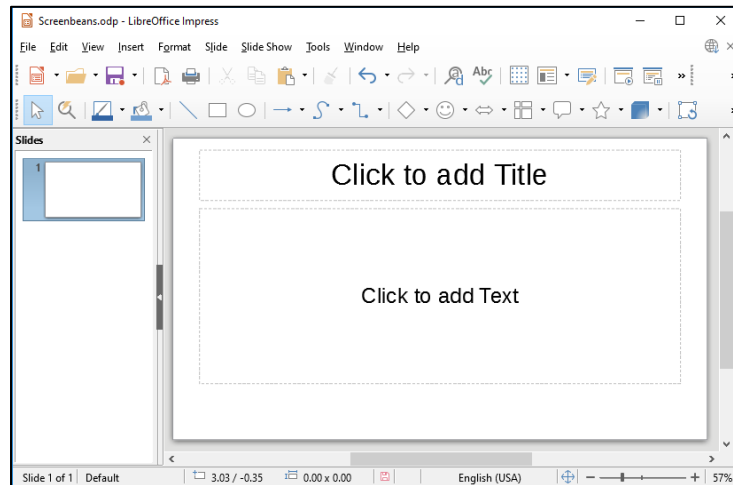


Fig. 9.13 The Normal View of the Title slide

Typing the outline entries

The *Normal View* is fine after you have planned and built your presentation and you want to check out and edit individual slides that you have already created. But when you are at the planning stages and you want to create an *outline* of the *text* you want to include on each slide, it is sometimes best to use the *Outline View*. *Impress* provides a lot of help such as this while you're developing your presentation.

Let's switch to the *Outline View* now.

In the **View** menu click on **Outline** to switch to **Outline View** (Fig. 9.13)

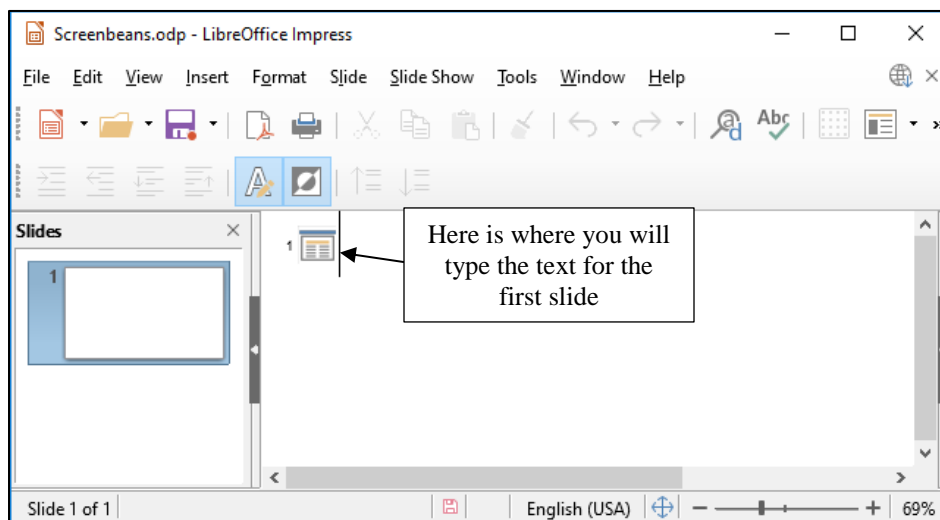


Fig. 9.13 The Outline View of the screen at the start of a new blank presentation

As you type the text for each slide in the *Outline View*, the text will be associated with the final version of each *Impress* slide with no extra effort on your part. You'll see how this works when you switch back to *Normal View* after you have typed in the outline that you see illustrated in Fig. 9.14 below.

Don't start typing text just yet, though. Refer to the outline as you work your way through the directions that follow Fig. 9.14.

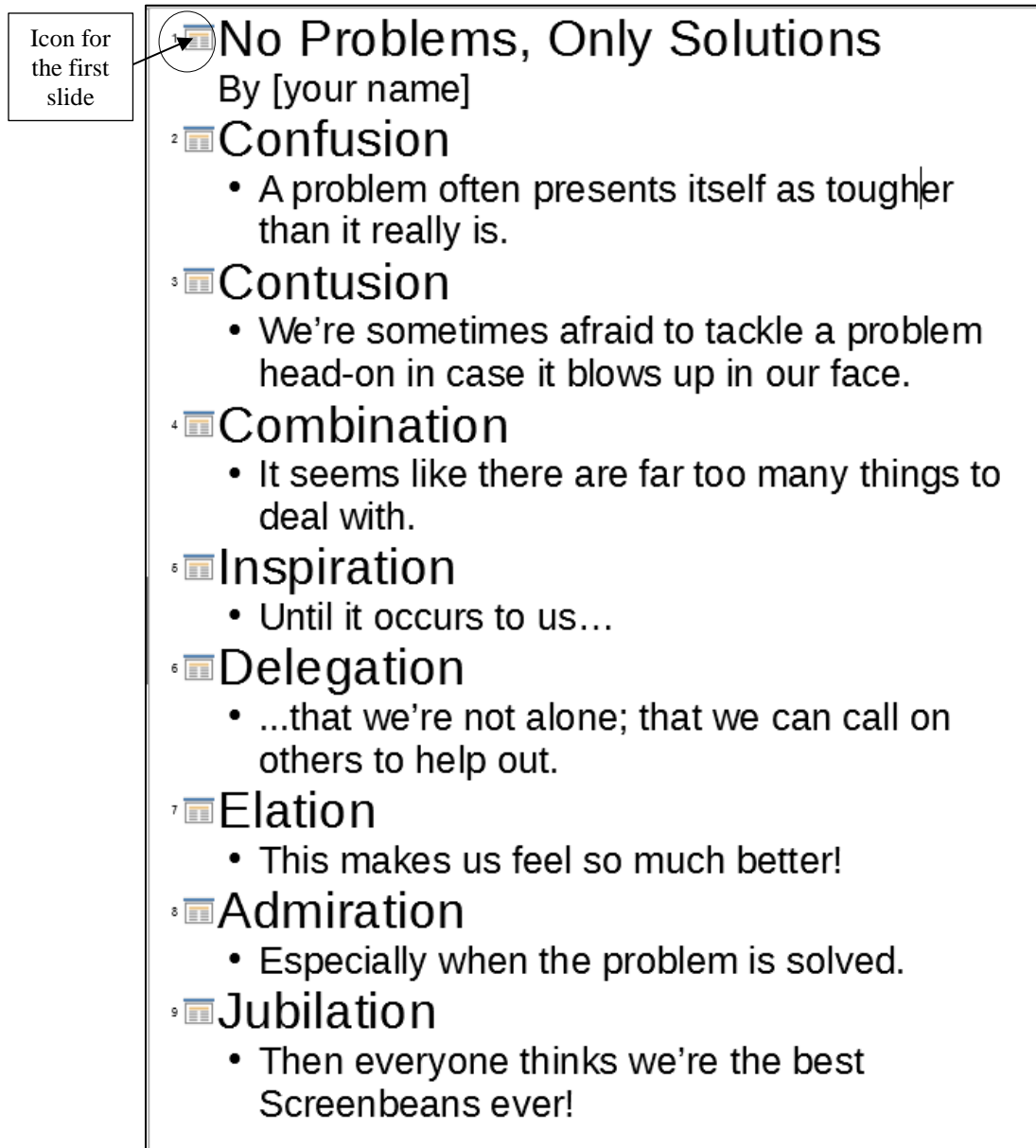


Fig. 9.14 The outline for the Screenbeans presentation

Next to the **icon** for the **first slide**, type the title **No Problems, Only Solutions** (see Fig. 9.14 above), then hit **Enter** on the keyboard

Impress now presents a new icon for a *second* new slide because it assumes that you have finished adding text to the first slide. But you haven't finished with the first slide yet since you need to add the author's name as a sub-title on the Title slide. To do this, you need to *Demote* the next set of

text (*By [author's name]*) so that it stays on the same (Title) slide (which means you must *decrease its level on the slide*). You'll see how to do this as you follow along with these directions.

Switching levels

Impress does have a Text formatting toolbar which has tools for promoting and demoting levels of text in an outline (Fig. 9.15).



Fig. 9.15 Tools for Demoting and Promoting levels on an *Impress* slide

The easiest way to demote and promote slide levels, however, is to use *Quick Keyboard Commands*¹. The *Tab* key, for example, *demotes* (moves down a level on the same slide), and *Shift-Tab* *promotes* (moves text up a level on the same slide, or moves up to a whole new slide). As you use these quick keyboard commands, you'll soon get the hang of it.

Demoting to a lower List Level

Hit the **Tab** key to **demote** to a **lower outline level** now, then type **By [your name]**—type *your own name*, of course—not “your name” or “Bernie Poole!”—and hit the **Enter** key

Fig. 9.16 shows how your outline entry for the first slide will look at this stage.

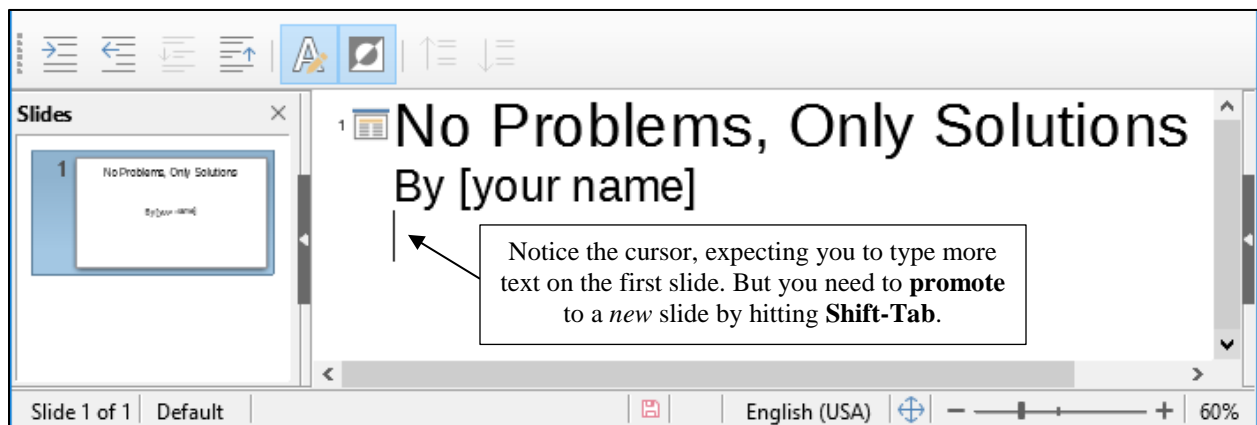


Fig. 9.16 The outline entry for the first slide

That's all you need by way of text on the first slide. Now you need to set up for a new slide. To do that in the outline, you hit *Shift-Tab*, which *takes* the level *back* to the top level of a New Slide.

¹ The author has prepared a “crib sheet” of LibreOffice Quick Keyboard Commands which is available on the web at <http://www.pitt.edu/~poole/libreoffice6Tutorials/libreofficeBackcover.pdf>.

Promoting to a higher List Level

Hit the **Shift-Tab** keys together to move **up** (promote) to a **higher** (top) level in the Outline

Notice that you now have a **top level icon** for a **new slide**, and the cursor is waiting for you to type in the text for this **second slide** (Fig. 9.16)

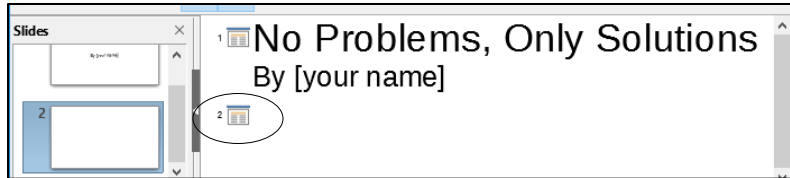


Fig. 9.16 Icon for the second slide

Now you are ready to type in the entries for the second and remaining slides. As you know, the content for all the slides is illustrated in Fig. 9.14 on page 313. Let's continue with Slide 2.

Type **Confusion** for the title of **Slide 2**, and hit **Enter**, then hit **Tab** to **demote** to a **lower List Level**

Look at your outline now and notice that the next entry you type will be indented and bulleted.

Type the **lower level text** for the second slide (*A problem often presents itself as tougher than it really is...*, etc.) from Fig. 9.14 on page 313, then hit **Enter**

That is all you need by way of text for the second slide. As you can see, you must now *Promote* to a higher level for the new slide 3.

Hit **Shift-Tab**

This starts a new slide (Slide 3). You should be starting to get the hang of this.

Go ahead and complete the rest of the outline illustrated in Fig. 9.14 on page 313, **demoting** (**Tab**) and **promoting** (**Shift-Tab**) the text levels as you go

After you have typed the **Title** and **text** entries for **all 9 of the slides**, navigate to your **disk drive > Work Files for LibreOffice > Data Files > Impress Documents** folder and **Save** the **Screenbeans Impress** slide show

Now go to **View menu > Slide Sorter** to switch to **Slide Sorter view** (Fig. 9.17)

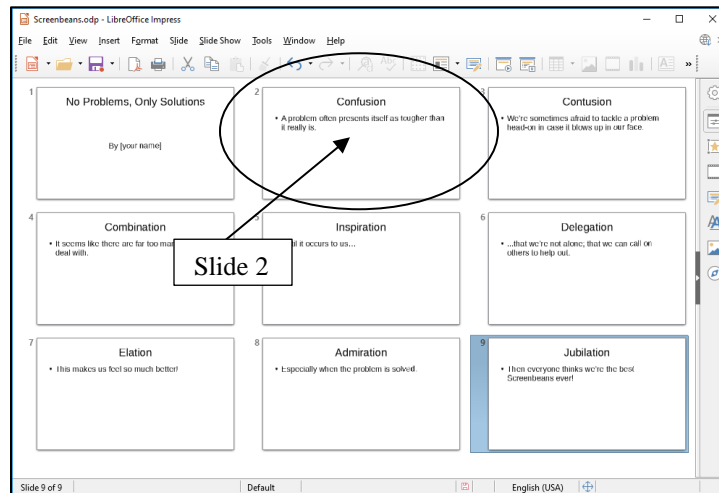


Fig. 9.17 Slide Sorter View

Changing the layout of Slides 2-9

You may notice that *Impress* automatically selects *Title, Content* layout for all the slides after the *Title slide*. But the new layout we need for slides 2 thru 9 is *Title and 2 Content*. Let's fix this first.

In the **Slide Sorter** view, click on the **thumbnail** for **Slide 2** (Fig. 9.17 above), then hold down the **Shift key** and **keep it down** while you click on **Slide 9**

Slides 2 thru 9 should all now be highlighted (Fig. 9.18 below).

Now, with **Slides 2 thru 9 selected**, go to **View > Slide Layout** to bring up the **Properties pane** with its slide controls and **menu of Layouts** (Fig. 9.18)

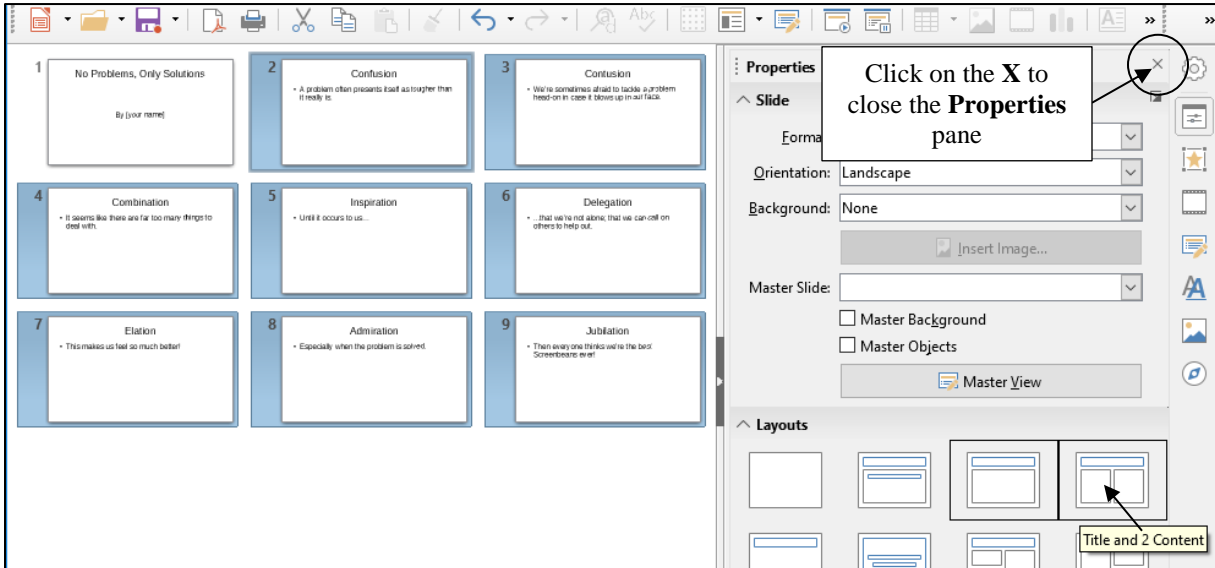


Fig. 9.18 Slide Sorter View showing the Properties pane

In the set of **Layouts templates** in the **Properties frame** on the **right** of the Slide Sorter window, locate and **click** on the **Layout** for a **Title and 2 Content** slide (Fig. 9.18 above)

Now click on the **X** at the **top right** of the Slide Sorter window to **close** the **Properties pane** and check out the slides with the new Title and 2 Content layout (Fig. 9.19)

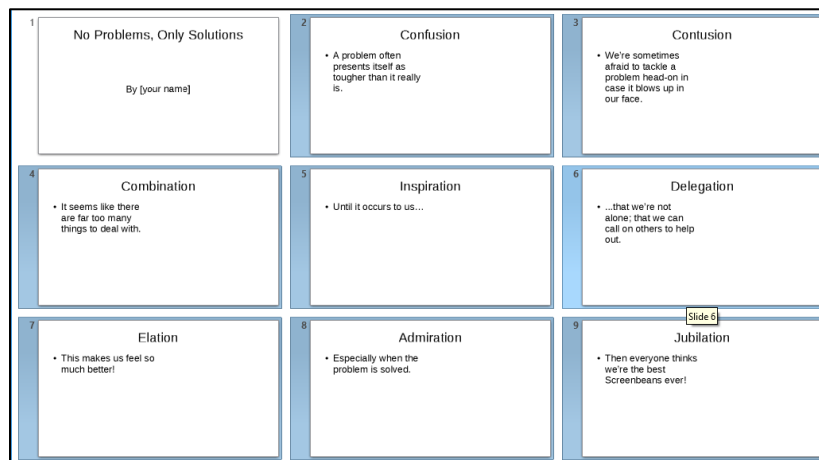


Fig. 9.19 Slides 2-9 with Title and 2 Content layout

You can now see a thumbnail of each of slides 2-9 with, on the left hand side, the text you typed in and, on the right, an empty space for further slide content, which can be more text (or a table from a *Base* database, or images, or a chart imported from a *Calc* spreadsheet, or even a movie).

Time to **Save** your work (**Ctrl+s**)

Notice how easy it is, using the *Slide Sorter* view, to check out how your work is progressing.

Still in the **Slide Sorter** view, click once on **Slide 2** to make it the selected slide and click on the **View menu > Normal** to switch to the **Normal View** of the slides (Fig. 9.20), then **Save** the Screenbeans presentation once more

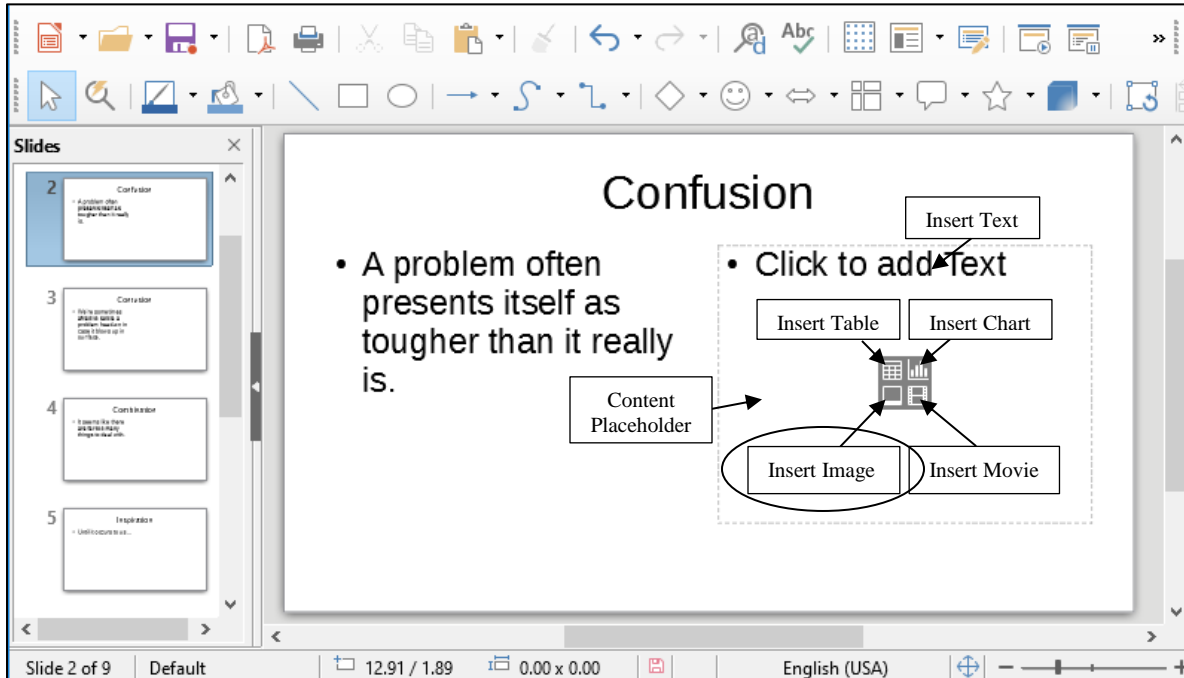


Fig. 9.20 Normal View for Slide 2 showing the Content Placeholder and the 5 Content options

In *Normal View* you see the slide as it will show in a presentation. All you have to do now is add an image in the Content Placeholder. In Lesson 10 you'll have the opportunity to practice adding a table from a *Base* database, a chart from a *Calc* spreadsheet, and a movie, too.

Adding pictures to the slides

For Slides #2 through #9 you are going to insert a Screenbean² graphic in the *Content Placeholder*.

The set of pictures that you are going to use for this presentation are from *Microsoft Corporation's* clip art gallery. They may not be available on your computer since you may not be working online. So, for the sake of this exercise, a folder containing the eight *Screenbean* clip art drawings has been prepared for you (listed in Fig. 9.21 on the next page). You'll find the folder on your disk drive, inside the *Work Files for LibreOffice* folder.

On the **right hand side** of **slide #2**, click on the **Insert Image** tool—the **lower left** of the four Insert object icons (Fig. 9.20 above) to bring up the **Insert Image**

² Screenbeans are cartoon characters created by Microsoft, Inc.

dialog box, then navigate to your **Work Files for LibreOffice > Impress Files > Screenbeans** folder (Fig. 9.21)

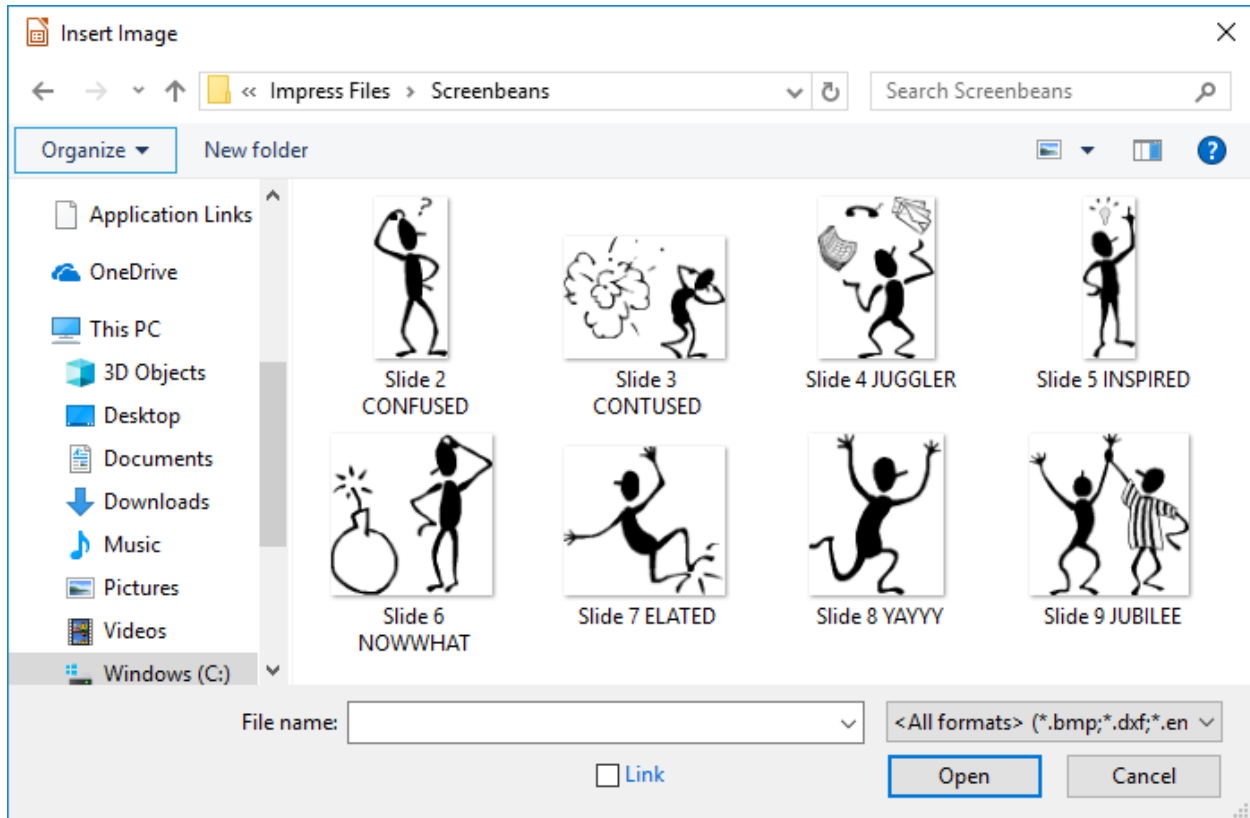


Fig. 9.21 The *Insert Image* dialog box listing the 8 Screenbean image files

In the Screenbeans folder there are the 8 pictures you need for the next 8 slides in the presentation. Fig. 9.22 lists the pictures in the order in which you should use them in the slides.

Slide 2 CONFUSED
Slide 3 CONTUSED
Slide 4 JUGGLER
Slide 5 INSPIRED
Slide 6 NOWWHAT
Slide 7 ELATED
Slide 8 YAYYY
Slide 9 JUBILEE

Fig. 9.22 The sequence you will use for the Screenbean pictures in the presentation
In the **Screenbeans** folder, **double click** on the **Confused** file (“Confused” with an “f”, not “Contused” with a “t”!)

Impress inserts the Screenbean figurine on Slide 2 inside the right side placeholder, with handles around it so that you can re-size it, if necessary, to fit the space provided for it on the slide.

Check to make sure the art is **correctly positioned** on the **right side** of the slide (it should look something like Fig. 9.23), then click anywhere **off the image** in order to set it in place (though you can click back on it anytime to later change the image's size and position)

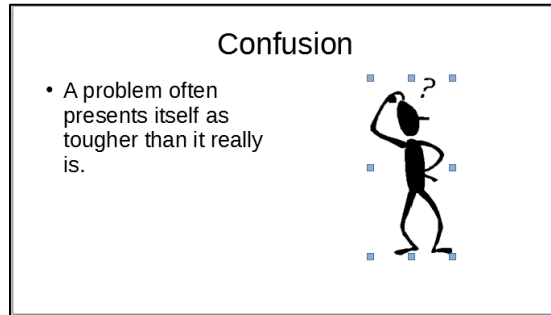


Fig. 9.23 Slide 2 with the image in place

Repeat this exercise for the next **seven** slides, working from the **Slides Panel clicking** on Slide 3 first then on each slide in turn to bring up the **Normal View** for that slide, then clicking on the **Insert Image** icon and loading the **Screenbean images** one by one in the order they are listed in Fig. 9.21 on the previous page

When you are done with slide #9, **Save** your work to this point (**Ctrl+s**), then click on the **View menu > Slide Sorter**

In the *Slide Sorter* view, your *Impress* presentation should now look like Fig. 9.24.

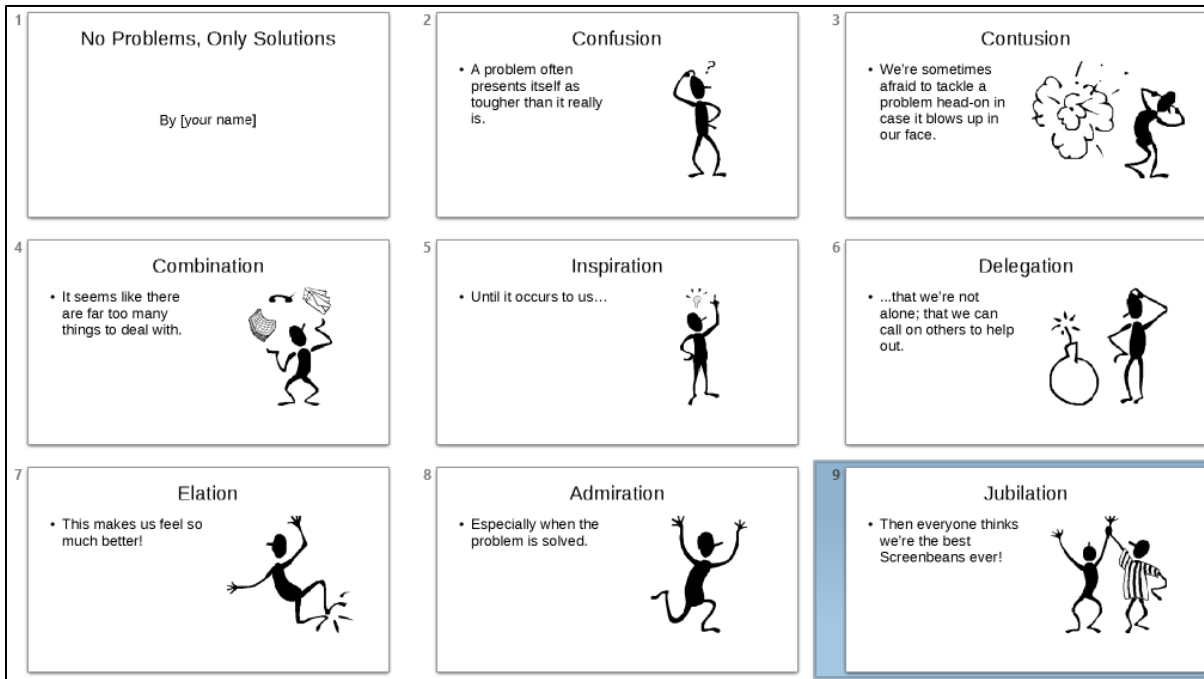


Fig. 9.24 Screenbeans slide show after inserting all the Screenbeans images

9.4 ADDING BELLS AND WHISTLES TO THE PRESENTATION

Resizing the Screenbeans on each of the slides

The Screenbean images on each of the slides are smaller than they need to be. If necessary you could also *crop* an image to select out just the part of the image you want to use. To do this you would *right click* on the image and, in the context menu that pops up, select the *Crop* option. You don't need to do that here, but you could if you wanted to.

In the **Slide Sorter View**, **double click** on **Slide 2** to open it in **Normal View**

Click on the **Screenbean image** to bring up the small **blue handles** around it (Fig. 9.25 below); then grab any one of the **CORNER handles** to **stretch the image** so that it is **as large as possible** in the space on the **right side** of the slide; just **be careful not to distort** the image or to **overflow the borders of the slide**, or to drag the top of the image much **higher than the top line of sub-text** as illustrated in Fig. 9.25

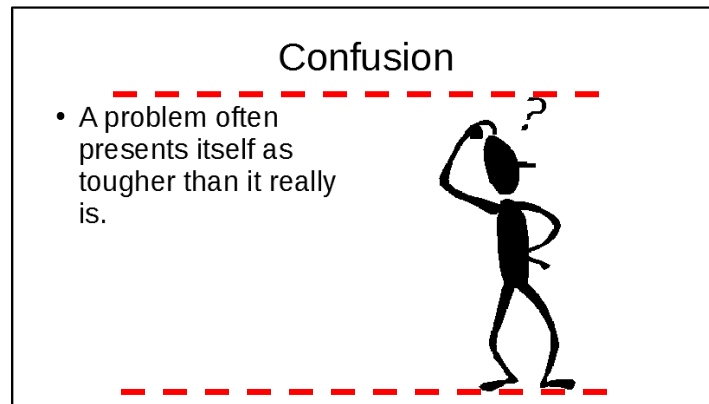


Fig. 9.25 Stretch the Screenbean using the corner handles

Now do the same with the **Screenbean images** on the **other 7 slides**—to end up with something like Fig. 9.26—then **Save** your work once more

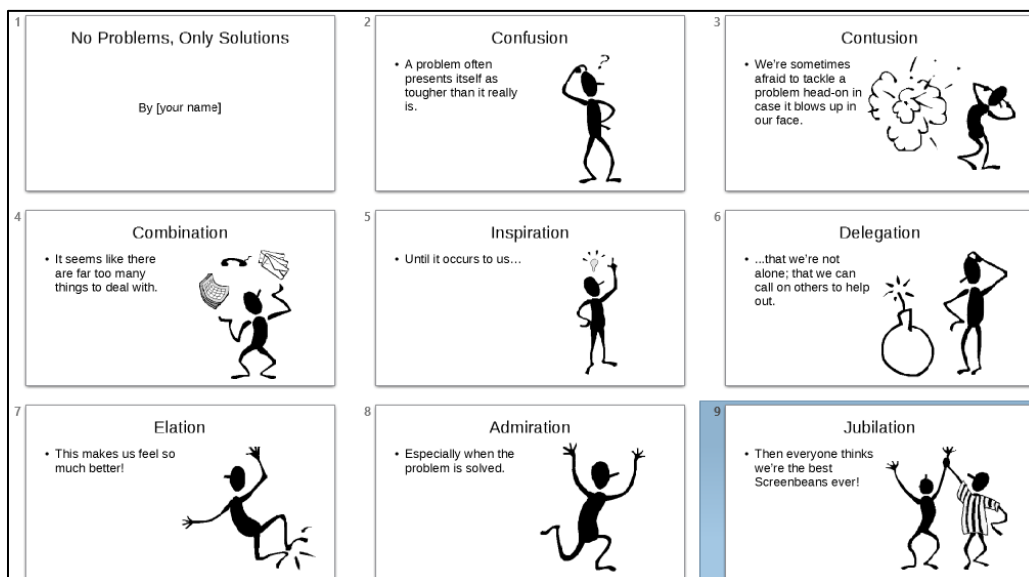


Fig. 9.26 Screenbeans presentation after resizing the images

Adding Transitions, Speed and Sound effects, and Timings

The following task would best be done—and easiest to do—while you are in the *Slide Sorter* View.

If not, go to **View > Slide Sorter**, but assuming you are still in the **Slide Sorter** view, go to **View > Slide Layout to Open the Properties pane** (Fig. 9.27)

The full set of slides plus the Properties pane should now be showing on your screen (Fig. 9.27).

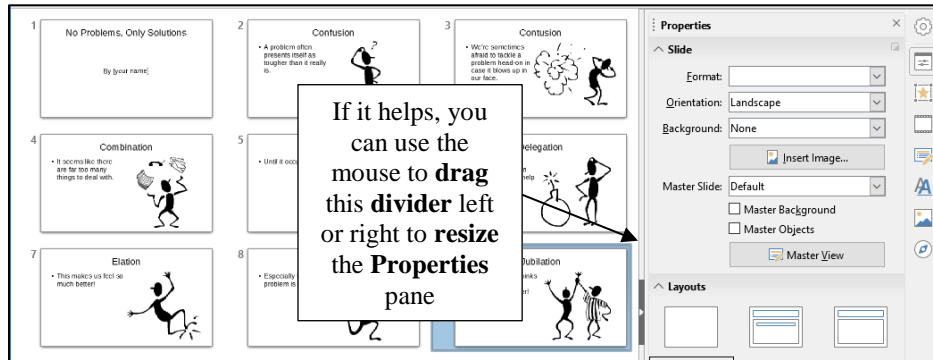


Fig. 9.27 Impress Slide Sorter window after showing the Properties pane

For this exercise, you are going to add the same *Timing*, *Sound effect*, and *Slide Transition* to all the slides, though you could, if you wanted, use different timings, sound effects, and transitions for each individual slide. You'll practice doing this in Lesson 10.

Adding Slide Transitions

In the **Edit** menu, click on **Select All (Ctrl+a)** to select **all** the slides, then click on the **Slide Transition** button (Fig. 9.28)

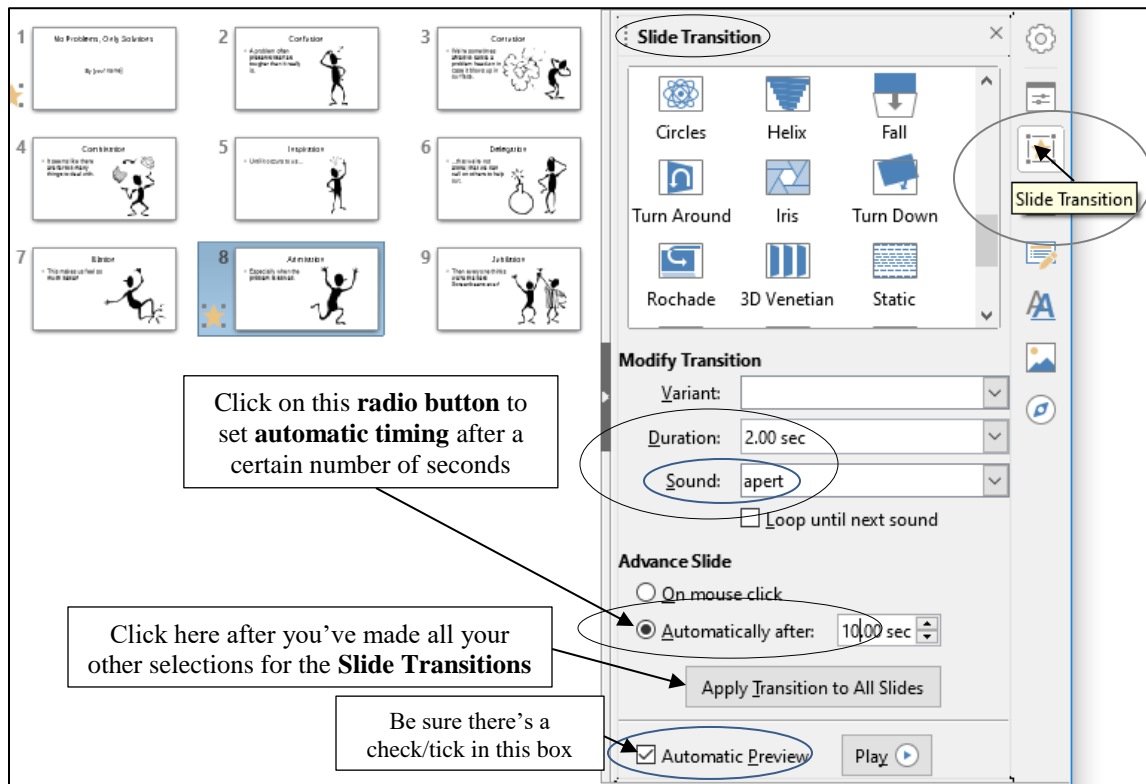


Fig. 9.28 The Slide Transition button

This Slide Transition button brings up, on the right side of the *Impress* window, the Slide Transition pane (Fig. 9.28 previous screen).

To get a **Live Preview** of any of the transitions, make sure the box next to **Automatic preview** at the bottom of the **Slide Transition pane** is **checked/ticked** (see Fig. 9.28 above)

Click on any slide, then click on a **Transition** in the menu and watch the effect of the slide transition on the selected slide

Try several of them to get a feel for how they work, then select the one you most like

Adding Speed and Sound effects

Fig. 9.28 above illustrates the *Modify Transition* options. A *Transition* can be timed to happen at any one of three speeds (Durations): Fast (1 sec), Medium (2 sec), or Slow (3 sec). We'll go with Medium speed (2 sec), but feel free to choose whichever speed appeals to you.

We're also going to use the *Apert* sound effect, but again feel free to choose any sound effect that appeals to you.

In the **Modify Transition** section, select one of the three **speeds**, then select any one of the **sound effects**

Setting Timings for the slides

Fig. 9.28 on the previous page illustrates the *Advance slide* timing options. The Timing options will allow the user to advance to the next slide either manually (by clicking the mouse) or automatically (*after 10 seconds* is our choice).

In the **Modify Transition** section, click on the **radio button** next to **Automatically after:** and increase the **Advance slide** time to **10 (ten)** seconds

You are applying these Timing and Transition effects to *All* the slides in the presentation. But you should bear in mind that you could have different effects for each slide if you wanted, simply by going from slide to slide, setting the options, and not applying them to *All Slides*.

This is only a good idea if you are designing a slide show where your goal is to impress your audience:

- (a) with your *Impress* skills;
- (b) with your artistic/creative nature;
- (c) because you actually want to distract your audience from the flow of your presentation;
- (d) because you just have no idea what you're doing!

So, unless you know what you're doing, and for the sake of this exercise, let's apply these settings to *All Slides*.

Click on the button to **Apply Transition to All Slides** (see Fig. 9.28 previous page), then **Save** the slide show (**Ctrl+s**)

Now would be a good time to check out the presentation.

In the **Slide Show** menu select **Start from First Slide** and sit back and enjoy what you've made of the show to this point

Each slide will hold on screen for 10 seconds, which is ample time to read what’s on the slide. But if you want to move the show along, just click the **left mouse button** or tap on your touch pad (or your screen, if you have a touch screen) at any time.

Hit **Esc** top right of the keyboard when the show ends

Choosing a Master Slide

Impress gives you all kinds of assistance in the design of your slides. So far we’ve used the basic set of *Slide Layouts*, which are OK when it comes to the general layout of each slide in your show.

The *Slide Layouts* help you throw together a so-called “quick-and-dirty” *Impress* presentation, where you’ve planned what you want to “show and tell,” but you haven’t given much thought to how you want your show to look.

The easiest way to make your slides more interesting is to use one of the *Master Slides* that come with *Impress*, or those you create yourself. You can select from a set of pre-formatted slide *Master Slides* involving graphics, colors, and animations.

Let’s check out some of these Master Slides now.

Stay in the **Slide Sorter** view, make sure **all the slides are selected (Ctrl+a)**, then click on the **Master Slides icon** in the **column of icons** on the **right edge** of the *Impress* window (Fig. 9.29)



Fig. 9.29 The *Impress* Master Slides icon

Hit **Ctrl+a** to **select all** the slides in the Slide Sorter view, then click on the various **Master Slides designs** to check them out

As you click on each one, wait while *Impress* updates each slide with the Master Slide design. As you’ll quickly see, the best Master Slides for the Screenbeans slide show are those that have a predominantly white background because the Screenbean images are themselves black on a white

background. So, a good Master Slide for now is probably the one called *Bright Blue*. Let's work with that.

For the sake of the exercises that follow, click to **select the Bright Blue Master Slide design**, then **Save** this final version of the **Screenbeans** presentation

Impress quickly applies the selected design template to all the slides in your show.

Once again go to the **Slide Show** menu, select **Start from first Slide** and take a few minutes to check out the show from start to finish

Hit **Esc** when you're done

One final word about the limitation presented by the Screenbeans all being black images on a white background, which restricts the number of Master Slides you can use. *LibreOffice* offers the option to “use an external program” to edit an image—for example, by making the background *transparent*. If you did this with the Screenbeans, you'd be able to use any of the Master Slides for your presentation.

That being the case, if you know what you're doing, you could, ahead of time, use a Graphics Design program available to you for this purpose. You'd use the program to render the Screenbeans as Black with a transparent background, allowing you to use any of the *LibreOffice* Master Slides, as well as design your own.

Just a thought. We'll be talking more about Master Slides in Lesson 10.

9.5 PRINTING PRESENTATION HANDOUTS

A nice feature of *Impress* is its ability to provide you with hard copy versions of the slides and/or of the outline text of a presentation. This is useful for the preparation of handouts for an audience such as a class or other lecture environment. Here are the steps to do this (learn here how to do it, even if you're unable to use a printer where you are using these tutorials).

From the **File** menu choose **Print** (Fig. 9.30)

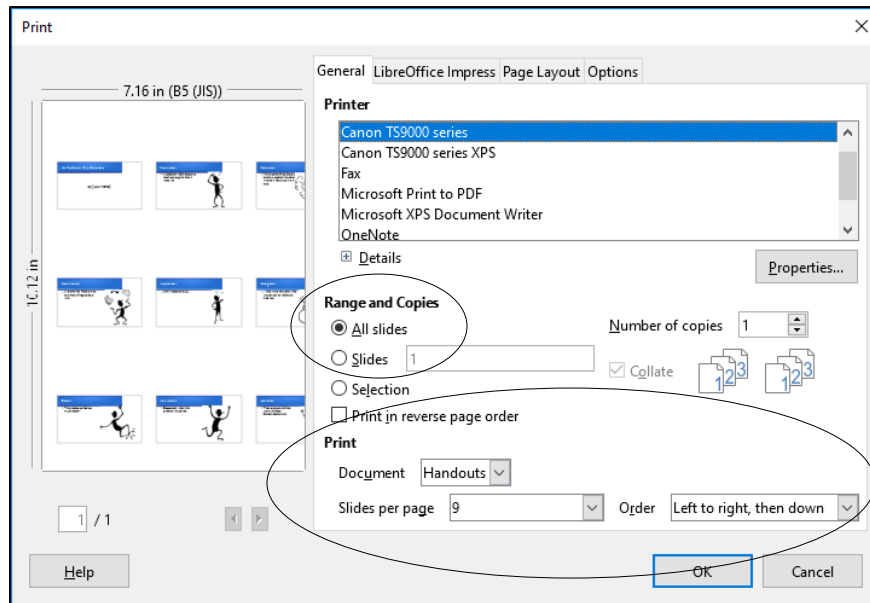


Fig. 9.28 Selecting the Handouts option for printing

In the **Range and copies** section select **All slides**

In the **Print** section, click on the **down arrow** in the **Document** data entry box and, in the menu of options, select **Handouts** (see Fig. 9.28 above)

In the **Slides per Page** box select **9**

Notice that the slides will thus be printed *nine* per page, three-by-three, left to right, then down.

Click on **OK** if you are able to print a copy of the presentation

This handout can then be distributed to an audience or a class for note-taking, review or reinforcement.

Save this final version of the **Screenbeans** show then, before you finish, go ahead and make a **backup copy** of your **Screenbeans** presentation

If you wanted to print the handouts in Black and White or what's called Grayscale, in the Print dialog box you'd click on the *LibreOffice Impress* tab and click on the appropriate radio button of your choice.

LOOKING BACK

Lesson 9 has been devoted to the *Impress* program that is designed to help in the preparation of presentation materials of all kinds. It is not only a very useful tool, but it is also enjoyable to work with. Outlines and slide shows will add polish to the lessons or presentations you will prepare for your students and other groups during the course of your career.

For example, a math or chemistry teacher might intersperse her lessons with professional-looking formula charts or chemical structures. Any teacher could make an impressive graphic introduction to a class. An administrator could do the same for her school, the presentation to be viewed in the office by visitors.

But *Impress* is still more valuable as a tool for learning in the hands of your students. They will soon learn the necessary skills to use the program with flare as they create presentations of their own. As their teacher, you'll guide them in the direction of learning projects of all kinds related to the curriculum K-12. In the context of *Impress*, students will discover knowledge and construct their own mental database of information that will stand them in good stead in their future lives.

LOOKING FORWARD

Impress is a useful teaching tool, providing added value for both the teacher and the students. A carefully prepared and well-designed presentation, appropriately used during the course of a class, helps the teacher stay focused and on track. A presentation that is rich in multimedia gives the teacher the opportunity to spice up presentations in various ways that promote added interest and engagement for students. *Impress* also can be used to *create* as well as *enable* powerful learning environments.

Lesson 10 will show you how to create interactive presentations in which the user learns while responding to the material that is being presented, thus encouraging engagement, which promotes learning. More powerful yet, *Impress* may be best used in the discovery mode of learning, where the students create presentations that involve research in the pursuit of knowledge, incorporating

multimedia—still images, video, and sound, along with text—in the construction of a personal understanding of the subject matter being learned.

A thoughtful teacher will encourage her students to work together on such projects and present their work to the class, thus applying the adage that the best way to learn is to teach.

As the saying goes: "I hear and I forget, I see and I remember, I do and I understand."

SKILL CONSOLIDATION

1. Prepare a presentation on the subject of the American colonies. Make sure you have at least eight first level topics (eight slides), as well as a title slide and an acknowledgements slide.
2. Prepare a presentation on the subject of US Presidents (or any subject of your choice that you might use with a K-12 age group appropriate to your major). Make sure you have at least eight first level topics (eight slides), as well as a title slide and an acknowledgements slide.
3. Prepare a presentation on the subject of the American movie scene. Make sure you have at least eight first level topics (eight slides), as well as a title slide and an acknowledgements slide.
4. Prepare a presentation in a style of your own choosing with at least three levels on the subject of contemporary music. Make sure you have at least eight first level topics (eight slides), as well as a title slide and an acknowledgements slide.
5. Create a slide show with yourself as the subject—you the person, you the teacher. Use graphics drawn from any source you like. Make sure you have at least eight first level topics (eight slides), as well as a title slide and an acknowledgements slide.
6. Create a slide show on the subject of pets. Use graphics from clip art or created in a Drawing or Painting environment. Make sure you have at least eight first level topics (eight slides), as well as a title slide and an acknowledgements slide.
7. Create a slide show on the subject of geometric shapes. Use graphics drawn from clip art or created in a Drawing or Painting environment. Make sure you have at least eight first level topics (eight slides), as well as a title slide and an acknowledgements slide.