



# 2008 PSCF Annual



**2007 Pennsylvania Player of the Year**  
**GM Alexander Shabalov**

**2007 Pennsylvania Junior Player of the Year**  
**Alexander C. Heimann**

**2007 Pennsylvania Female Player of the Year**  
**Tamara H. Corey**

**2007 Pennsylvania Senior Player of the Year**  
**IM Edward W. Formanek**

**2007 Pennsylvania Organizer of the Year**  
**Samuel M. Lamonto, Jr.**

**2007 Pennsylvania Lifetime Achievement**  
**Dr. Ira Lee Riddle**

Each year we try to provide recognition to Pennsylvanians who have made significant contributions to chess in our state. We haven't formalized exactly what factors go into the consideration of whom should be chosen, but included are excellence of play, sportsmanship, participation, and increasing the availability of chess opportunities to others. We leave it the officers of the PSCF and Pennsylvania's USCF delegates to weigh these factors in making a choice. We don't have space to provide all of the accomplishments of those chosen, but I will try to provide some of their highlights from 2007. And because so many deserve recognition, I will also mention some others who were considered along with their achievements.

GM Alexander Shabalov was chosen Player of the Year based upon his exceptionally strong results in major events. Those include, clear first in the US Championship in Stillwater, OK; clear first in the Continental Open; shared first in the US Open, World Open, Miami Open, Millennium Chess Festival and Cardinal Open. And he even found time to play a match in the Pittsburgh Chess League! While it is pretty much impossible for anyone to top all of that, I do want to mention IM Bryan G. Smith, last year's Player of the Year, who won the PA State Championship and FM Robert M. Sulman, who won both the PA Game/29 and PA Action titles.

For Junior Player of the year, Alexander C. Heimann was chosen over Pennsylvania's other three junior masters, his brother Mark A. Heimann, Daniel A. Yeager, and WFM Alisa Melekhina. All four of these players significantly increased their ratings and had many excellent results. Alex stood out from this great group because of his victory by an entire point in the National K-12 Grade Championship (Grade 9), with a perfect 7-0 score!

Our Female Player of the Year is Tamara H. Corey. In 2007, Tamara's rating jumped from 1685 to 1881, including a win over FM Rodion V. Rubenchik. WFM Alisa Melekhina also had an excellent year with an invitation to the US Women's Championship, shared first in the US Amateur East and shared 2nd in the PA State Championship.

Having turned 65 in 2007, IM Edward W. Formanek just became eligible for Senior Player of the Year. Playing in all of the strong events in the eastern United States (along with a trip to Hastings, England) he showed his continued strength of play - even increasing his rating in 2007. Don Meigs continued his activity in Pittsburgh-area events and added the PA Ages 65 & Up Championship to his trophy case!

The Organizer of the Year is Samuel M. Lamonto, Jr. Sam helped to organize the Danville and the Susquehanna Valley Opens, providing important opportunities for players outside of the chess hubs of Philadelphia, Pittsburgh and Allentown to play. These events were very player-friendly, and the players showed their appreciation with applause at the SVO. Sam also helps run the Harrisburg West Shore Chess Club and is the PSCF Central Pennsylvania Vice-President. Look for him at this year's state championship, which he is primarily involved in organizing in Harrisburg.

The inaugural Pennsylvania Lifetime Achievement award goes to Dr. Ira Lee Riddle. Who else could possibly have received this award? Ira virtually single-handedly ran the PSCF from 1978 to 2002 as President, editor of the *Pennswoodpusher* and organizer of too many events to count. He passed the torch onto others in 2002, but has continued as the PSCF Eastern Pennsylvania Vice-President and active tournament organizer. I guess after doing so much for so long, that wasn't enough work to keep him busy though - so he even helped out our neighboring state Delaware with their publication for a while! While he is receiving the Lifetime Achievement Award now, we expect that he will be adding to his achievements for many years to come.

## Junior Gems

by Dan Heisman

**Nathan T. Hoxie - Elizabeth M. Conroy**  
**St. Vincent College - Fem Phalanx**  
**Pittsburgh Chess League, Round 6, 2/10/2008**  
*Annotations by Dan Heisman*

**1.e4 e5 2.Nf3 Nc6 3.Bc4 Be7**

In her comments to the game, Black gives herself two question marks here, not realizing that this is the acceptable, though hardly aggressive, Hungarian Defense to the Italian (3.Bc4). More common are the venerable Giuoco Piano (3...Bc5) and the tricky Two Knight's Defense (3...Nf6).

**4.d4**

The correct reaction.

**4...exd4**

It is almost always correct to take in similar break situations. Occasionally Black can defend with a passive move like 4...d6.

**5.Nxd4 Nxd4?**

This violates the opening principle "Don't help develop your opponent's pieces." Beginners think they are drawing the Queen "prematurely" to the middle without realizing that the piece that could normally attack it - the Queen's Knight - had to be traded off to attract it!

**6.Qxd4 Nf6 7.Nc3**

Interesting is 7.e5 with the thematic response 7...d5!

**7...O-O 8.Bg5**

Castling first is prudent. Once your opponent has castled, the longer you wait, the more likely you will get your king caught in the center. And "Never start a fight in the center when your opponent has castled and you have not."

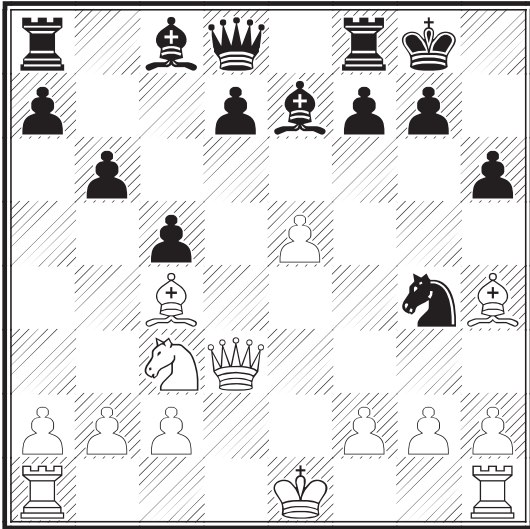
### 8...h6 9.Bh4 b6

World Computer chess champion Rybka likes the sharp 9...d5 but the prosaic 9...d6 is also more thematic than 9...b6.

### 10.e5

Correctly sharpening the struggle.

### 10...c5 11.Qd3 Ng4



### 12.Bxe7

Rather than developing the queen (see the note to Black's 5th move), 12.Bg3 retains a nice advantage.

### 12...Qxe7 13.f4 d6 14.Qxd6

Rybka likes 14.Nd5! much more.

### 14...Qxd6 15.exd6 Re8+ 16.Ne2

Rybka's move is 16.Be2 with a slight advantage. Now the advantage switches to Black.

### 16...Bf5 17.Bb5 Re6 18.d7 Rd8 19.h3 Nf6

19...Ne3 is much more aggressive with attacks on c2 and g2.

### 20.g4 Be4

Why not just play 20...Bxc2? Beginners sometimes make chess much too hard!

### 21.f5

An interesting counter-attack. I wonder if White considered Rybka's move of 21.O-O?

### 21...Re5 22.Rh2

Again 22.O-O.

### 22...Nxd7 23.Rd1

White is too highly rated not to know about castling! 23.O-O-O not only pins the knight but guards c2.

### 23...Rd5 24.Rxd5 Bxd5 25.Nc3

The position is back to about even.

### 25...Bb7?

Allowing a strong pin. 25...Ne5! is better as 26.Rd2? allows 26...Nf3+.

### 26.Rd2 Bc8 27.Nd5

Rybka plays these positions much better than I do and it likes 27.Bc6

quite a bit after which it thinks that White should win.

### 27...Kf8 28.Kf2?

Self-pinning the knight by unguarding the rook. Tactics don't just happen. Now Black can attack the knight more times than it can be guarded starting with 28...Nf6!

### 28...Nb8

Pinning the knight but not attacking it. Just like that the winning chance evaporates. Gotta stay on your tactical toes!

### 29.Re2 Bd7

The tricky 29...a6! attempts to remove the mate on e8 (should the Black Rook take the Knight) and thus make the threat on d5 real.

### 30.Bxd7

The chances are again about even.

### 30...Rxd7 31.Rd2 Nc6 32.c3 Ne7 33.c4 b5 34.Re2?

Abandoning d5.

### 34...bxc4

Oops! Wrong way. The simple 34...Nxd5 gives a big advantage.

### 35.Nxe7 Rxe7 36.Rc2

Good idea by White. Of course the blind capture 36.Rxe7? would result in a very bad endgame for White. But some players trade at every opportunity - no matter how bad!

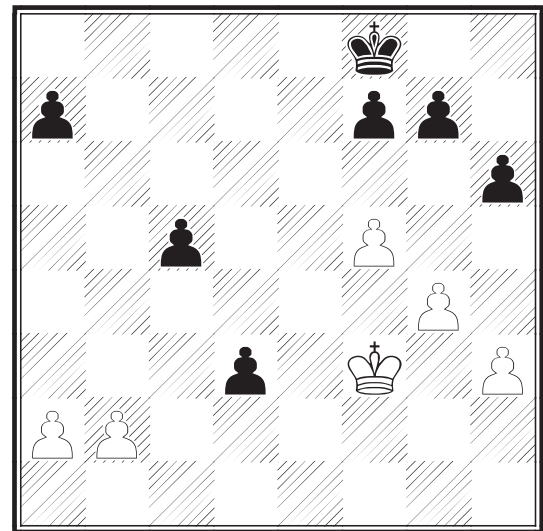
### 36...Re4 37.Kf3 Rd4 38.Rc3 Rd3+

This looks good but I think White has seen further. The simple 38...Ke7 retains a small but nice Black advantage.

### 39.Rxd3

Rybka thinks 39.Ke4! is equal.

### 39...cxd3



### 40.Ke3 Ke7?

Black sees that 40...c4! fails to continue to hold the d-pawn after 41.b3. What Black fails to realize (and many players a lot stronger than her would, also) is that this is still the best continuation as it eliminates Black's isolated and vulnerable c-pawn.

### 41.Kxd3 g6?

Getting the King up as fast as possible with 41...Kf6 was necessary.

### 42.Ke4?

42.fxg6 first was a winner. These kind of positions are extremely difficult to play, and yet I often see weaker players playing them

quickly as if the best move is obvious or finding it is easy!

**42...gxf5+?**

Rybka says the only drawing move is 42...Kd6. But I won't say that it must be nice to be a computer.

**43.Kxf5 Kd6 44.Kf6 Kd5 45.Kg7**

This move wins, but the simple 45.Kxf7 was a lot easier. Here you just have to count the promotions sequences. There is no other way!

**45...Kc4 46.Kxh6 Kd3 47.Kg7?**

47.b3! won easily. As I said, it's not easy, so TAKE YOUR TIME!

**47...c4 48.h4 Kc2 49.h5 Kxb2 50.h6 c3 51.h7 c2 52.h8=Q c1=Q 53.Qb8+ Kxa2 54.Qxa7+ Kb2 55.Qb7+ Ka2?**

Silly to go to a square where White can capture the pawn with check.

**56.Qxf7+ Kb2 57.Qf6+ Ka2 58.g5**

Of course, White wants to trade queens and Black has to do everything in her power to prevent that.

**58...Qc7+?**

This is clearly a case of "Hope Chess" as Black could not be looking to see if White can force the trade of queens. Perhaps Black was in time trouble or just tired of defending a difficult position!

**59.Kg6 Qc2+ 60.Kg7 Qc7+ 61.Qf7+ Qxf7+ 62.Kxf7 1:0**

A hard fought battle where both sides, especially Black, played above their ratings. If I told you this was a game between two 1400 players it would be believable. Many similar endgame errors have been played by players even stronger than that.

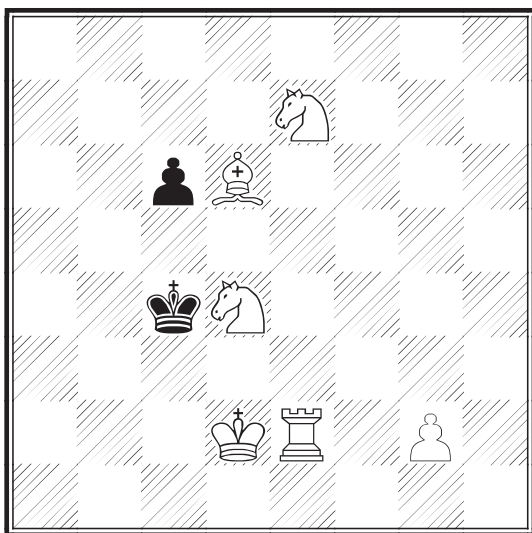
(With this win, Nathan T. Hoxie was on his way to an 8-0 record and the prize for Top 3rd Board in Division IV of the 2007-08 Pittsburgh Chess League. - editor)

## From the *Pennswoodpusher* Mailbox

by Tom M. Martinak

I received a question about the following problem which appeared on page 4 of the May 2008 *Pennswoodpusher*:

### Dr. Samuel Gold - Mate in three



The solution begins with **1.Re5** and our correspondent suggested **1...c5**. That still leads to mate, but does so in a much different (and possibly more elegant) way than in the solution mentioned in the article: **2.Nec6 cxd4 3.Na5++**.

## 'Prison Chess' Revisited

by Michael Perone

Not too long ago, Alex Dunne wrote an article for the November 2006 *Pennswoodpusher* titled "Prison Chess". Here is one of my own games, to show that for every correspondence chess game that comes out of the prison system with "spotty play", there is another to balance the scales.

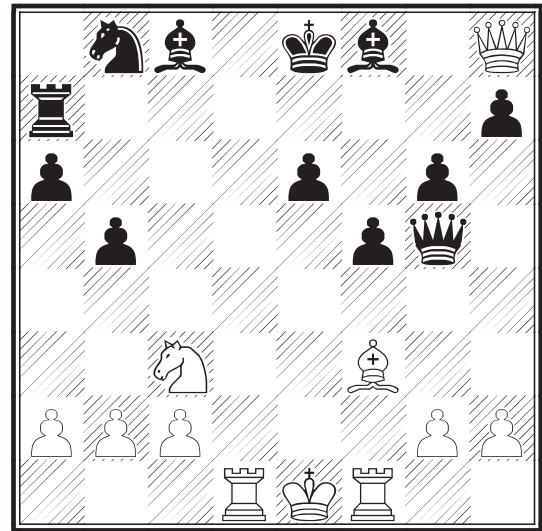
**Robert K. MacNeal - Michael Perone**  
John Collins Memorial, Correspondence, 2006  
*Annotations by Michael Perone*

**1.e4 c5 2.Nf3 d6 3.d4 cxd4 4.Nxd4 Nf6 5.Nc3 a6 6.Bg5 e6 7.f4 b5 8.e5 dxe5 9.fxe5 Qc7 10.exf6 Qe5+ 11.Be2 Qxg5 12.Qd3 Qxf6 13.Rf1 Qe5 14.Rd1**

An extraordinary position, but one which is well known in theory.

**14...Ra7 15.Nf3 Qc7 16.Ng5 f5 17.Qd4 Qe7 18.Bh5+ g6 19.Qxh8 Qxg5 20.Bf3**

This position is assessed as "with compensation for material" in *ECO*, but *BCO* (*Batsford Chess Openings*) takes it a little further to say that, after 20...Rg7 21.Rf2, White stands slightly better. Based on my knowledge of the variation and these assessments I gladly went into this position. However, sometime after the game ended, I came across analysis by Kalinichenko and to my surprise after 21...Rg7?! 21.Rf2 b4 22.Nd5! Black is in trouble. Theory could have "pulled my card" but that's another matter.



**20...Rg7**

Better would have been 20...Nd7, 20...b4 or 20...Qe3 all of which lead to very complicated play.

**21.Rf2 b4**

The very first move of my own in this game!

**22.Rfd2?! Bd7 23.Na4?!**

My opponent's own first two moves of this game were both mistakes. He can be forgiven the first (missing 22.Nd5!), but not this one. By the time this knight is allowed to come back into play the game is already over. 23.Ne2 Qh4+ 24.Kf1 e5 25.g3! would have been good for White.

**23...Qe3+! 24.Be2**

24.Kf1?! Bb5+ 25.Be2 Nd7! and Black is slightly better; 24.Re2 Qg1+

25.Kd2 Qxh2 and White is better after 26.Kc1 Qc7!? 27.b3 Kf7 with the idea of 28...Be7.

**24...Qg1+!**

This check avoids a subsequent Rd3 with tempo.

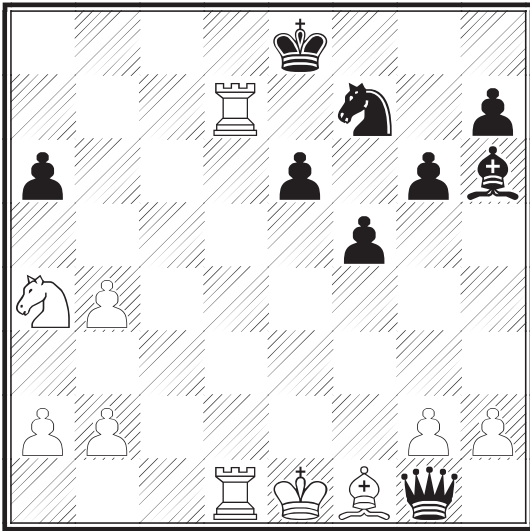
**25.Bf1 Nc6! 26.c3!?**

I was expecting 26.Rxd7 Qe3+ 27.Be2 Qg1+ 28.Bf1 Qe3+ with perpetual.

**26...Ne5 27.cxb4?**

The draw was still there with 27.Rd7. After the game I asked my opponent why he didn't take it and he replied, "The idea was to get my Knight back into the game. I foresaw the game continuation through 29...Bh6, but underestimated the impotence of the Rooks versus the utility of your Bishop".

**27...Nf7 28.Qxg7 Bxg7 29.Rxd7 Bh6**



**30.b3**

I was expecting 30.Rc7 but White is still in trouble after 30...Be3 31.Rc2 Qxh2.

**30...Be3 31.R7d2 Bxd2+ 32.Rxd2 e5 33.Nc5 e4 34.Nxa6 Ne5 35.Nc5 e3 0:1**

The advance of the f-pawn to f3 cannot be stopped.

My analysis of this games spans several pages but for the sake of brevity I have given only what I felt was necessary. At the time this game was played I was rated 2003 and Mr. MacNeal 2156, and so we see that a "mere prisoner" can hold his own against a very strong player.

## Games From PSCF Members

**Tamara H. Corey - Joseph J. Mucerino, Jr.**

Harrisburg West Shore CC Winter Hex, Rd 1, Lemoyne, 11/27/06

*Annotations by Joseph J. Mucerino, Jr.*

**1.e4 d5 2.exd5 Nf6 3.Nc3 Nxd5 4.Nxd5 Qxd5 5.d4**

Corey varies from her normal 5.Qf3.

**5...Nc6 6.c3 g6**

6...e5 is a popular alternative, but I did not want to trade queens so soon against the solid Corey; 6...Bf5 is also good.

**7.Nf3 Bg4 8.Be2 O-O-O 9.O-O Bg7 10.Bf4 h5 11.h3 Bf5**

**12.Re1 e5 13.dxe5 Qe4 14.Qc1 Nxe5 15.Nxe5 Bxe5 16.Bxe5**

**Qxe5 17.Bxh5**

White has won a pawn, but opened up the h file for Black's Rook in the process.

**17...Qf6 18.Bd1**

Fritz suggests 18.Bf3 Bxh3 19.Qe3 Bf5 20.Qxa7 c6 with a slight advantage for White.

**18...Bd7**

I could not make a sac on h3 work, so I decided to relocate my Bishop along the h1-a8 diagonal.

**19.Bb3 Bc6**

Black can now play 19...Bxh3. If 20.gxh3 then 20...Rxh3 gives Black a strong attack against White's exposed King.

**20.Qe3 Qf5?**

I decided to throw caution to the wind and ignore White's attack. With the benefit of hindsight, Black should have defended his pawn with 20...Kb8.

**21.Qxa7 b6 22.Bc4**

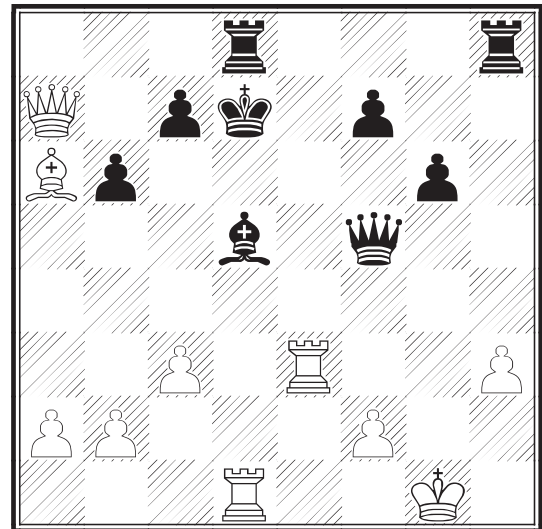
22.Re7, as Corey pointed out immediately after the game, should win: 22...Rd7 23.Rxd7 Kxd7 24.Rd1+ Kc8 25.Bc4 (Fritz).

**22...Bxg2! 23.Ba6+**

The Bishop cannot be taken, because of 23.Kxg2 Qxh3+ and mate next.

**23...Kd7 24.Rad1+ Bd5 25.Re3??**

When Corey played this, I thought I was completely lost. I reasoned that her King was fairly safe, while mine was trapped in the center and my Bishop was pinned to boot. I was just about to play 25...Rxh3 26.Rxd5+ Qxd5 27.Rxh3 and basically pray for survival, when, at the final moment, this move literally popped into my mind:



**25...Qg4+!!**

I could scarcely believe my eyes. If the Queen is captured, 26.hxg4 Rh1 mate. Corey's facial expression, to her credit, did not change. My jaw almost dropped to the floor when I saw this move. I cannot imagine what I would have done if it was played against me.

**26.Rg3 Qxd1+ 27.Bf1 Ra8**

27...Bc4 pretty much forces mate, but I was running short of time and chose the easily winning endgame instead.

**28.Rd3 Qg4+**

I knew this game was going to be published, so I had to play this move one more time.

**29.Rg3 Qxg3+ 30.fxg3 Rxa7** and Black soon won. **0:1**

**Joseph J. Mucerino, Jr. - Vinko Rutar**

Main Line CC June Swiss, Round 4, Gladwyne, 6/26/2006

Annotations by Joseph J. Mucerino, Jr.

1.d4 Nf6 2.Nf3 g6 3.Bg5 Bg7 4.Nbd2 O-O 5.e4 d6 6.c3 b6  
7.Bd3 c5 8.O-O Qc7 9.Qe2 h6 10.Bh4 e5 11.dxe5 dxe5 12.Nc4  
Nc6 13.Ne3 Ne7 14.Bg3

14.Rfd1 g5 15.Bg3 Nh5 +=.

14...Nh5 15.Bc4 Nxc3 16.hxc3 Bb7 17.Nd5 Nxd5 18.exd5

Fritz preferred recapturing with the bishop, but I wanted a passed pawn and hence took with the pawn.

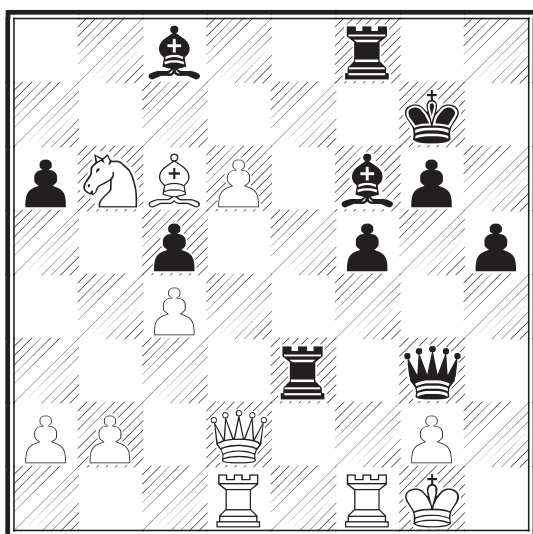
18...Qd6 19.Rad1 Rae8 20.Bb5 Re7 21.c4 f5 22.Nd2 h5 23.Nb1  
Bc8 24.Nc3 Bf6 25.Qd2 Kg7 26.Bc6 a6

The computer liked 26...Ba6.

27.Na4 e4 28.Nxb6 e3 29.fxe3 Qxc3 30.d6

Now the advantage has swung to White's favor.

30...Rxe3



31.d7??

Premature. White should try 31.Qf2 Be6 32.Qxc3 Rxc3 33.Rfe1.

31...Bd4 32.Rf2 Bxd7!

Fritz gave this move an exclamation and proclaimed "Doomsday". It never did that before!

33.Nxd7 Rc8

Doubling rooks with 33...Rfe8 appears to be even stronger.

34.Bd5 Rc7 35.Nxc5 Bxc5 36.b4 Bd6 37.Rf3 Rxf3 38.Bxf3  
Qh2+ 39.Kf2 Bg3+ 40.Ke2 Re7+ 41.Kd3 Bf4 42.Qb2+ Be5  
43.Qd2??

43.Qb3 covered some important squares.

43...Qh4 44.Bd5 Qd4+ 45.Kc2 Qb2+ 46.Kd3 Qa3+ 47.Kc2  
Qxa2+ 48.Kc1 Qa3+

Black can win the queen with 48...Qa1+ 49.Kc2 Qb2+ 50.Kd3 Qb3+  
51.Ke2 Bc3+

49.Kb1 Bf6

49...Qa1+ again wins the queen. This is why I do not resign until there is absolutely no hope!

50.c5 Bc3 51.Qa2 Qxb4+ 52.Qb3 Qxc5 53.Rc1 Re3 54.Qb7+  
Kh6 55.Bb3 Qb4 56.Qxb4 Bxb4 57.Bd5 a5 58.Rc7 Rg3 59.Kc2  
Kg5 60.Kd1?? Rd3+ 0:1

**Joseph J. Mucerino, Jr. - Tim Alles**

ASAP-PSCF-CCP Quads, Round 1, Philadelphia, 2/9/2008

Annotations by Joseph J. Mucerino, Jr.

1.d4 d5 2.Nf3 Nf6 3.e3 Bf5 4.c4 e6

This is book, but I do not really like it. One of the ideas behind 4.c4, other than putting pressure on the center, is to play Qb3. Once Black plays Bf5, the b7 pawn is undefended. Black can defend it with b6, or, as in the game, Qc8, but I would prefer to play c6 (instead of e6), and follow up with Qc7.

5.Qb3 Qc8

For the moment, 5...Nc6 is playable, because on 6.Qxb7? Black can respond with 6...Nb4 7.Na3 Rb8 8.Qxa7 Ra8 9.Qb7 Rxa3 and 10...Nc2. But Black will always have to keep an eye on b7.

6.Nc3 dxc4?!

I did not like this. White can recapture with a developing move, and White's e-pawn becomes that little bit more mobile. The solid 6...c6 should lead to equality.

7.Bxc4 c6

Preventing a possible 8.d5 by White.

8.O-O Bd6 9.Re1

Trying to mobilize White's center pawns while the Black King is still in the center.

9...Bc7

Black fears 10.e4 and 11.e5, forking knight and bishop, but 9...Ne4 should not be too bad for Black.

10.e4

Now White's pawns are in first gear.

10...Bg6 11.d5 e5

Wisely, Black tries to keep things closed.

12.Nh4

Not only going after the bishop pair, but also removing a guard of the f-pawn.

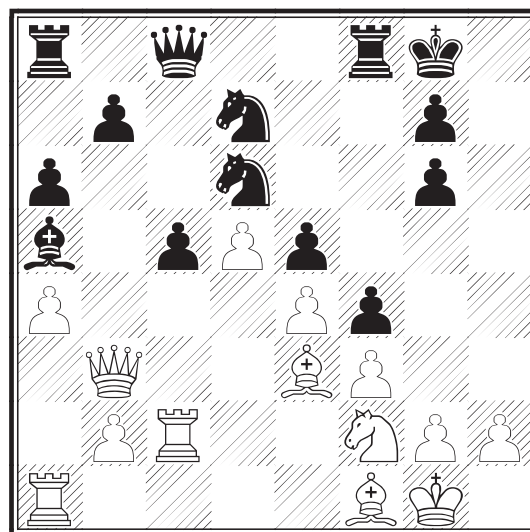
12...O-O 13.Nxc6 hxc6 14.Be3 a6 15.a4 Ba5 16.Rec1 c5

Keeping things solid but giving White a passed d-pawn.

17.f3

Giving the e-pawn some much needed protection.

17...Nbd7 18.Bf1 Ne8 19.Nd1 Nd6 20.Nf2 f5 21.Rc2 f4



22.Bd2?!

Missing a tactical shot: 22.Bxc5 Nxc5 23.Qa3 and White will eventually win the pawn back.

**22...Bxd2 23.Rxd2 c4 24.Qc3 b5 25.axb5 axb5 26.Rxa8 Qxa8 27.Qb4 Qb8 28.b3 Rc8 29.bxc4 bxc4 30.Qa3 Nb5 31.Qe7**

I was scared by this point, so I decided to try to force a perpetual check. Fritz prefers 31.Qa4, with advantage to White.

**31...c3?**

The question mark is from Fritz. It suggests 31...Qd6 32.Qxd6 Nxd6 33.g3 with equality.

**32.Qe6+**

The computer thought that White had an advantage after 32.Rd1 Qa7 33.g3. I still wanted to force a perpetual check.

**32...Kf8 33.d6 Re8??**

Alles told me after the game that he thought he was close to winning, so he went for it. Black should force White to take a draw with 33...cxd2 34.Qe7+ Kg8 35.Qe6+ Kh8 36.Qh3+ Kg8 37.Qe6+ Kh7 38.Qh3+ Kg8 39.Qe6.

**34.Qxd7 cxd2 35.Bxb5**

This is much safer than 35.Qxb5?! Qxd6 36.Nd1 Rb8.

**35...Qc8 36.Qxe8+ Qxe8 37.Bxe8 Kxe8 38.Nd1 1:0**

Here is a recent game against Thomas Fang, one of Pennsylvania's fastest rising junior players.

### Thomas Fang - Joseph J. Mucerino, Jr.

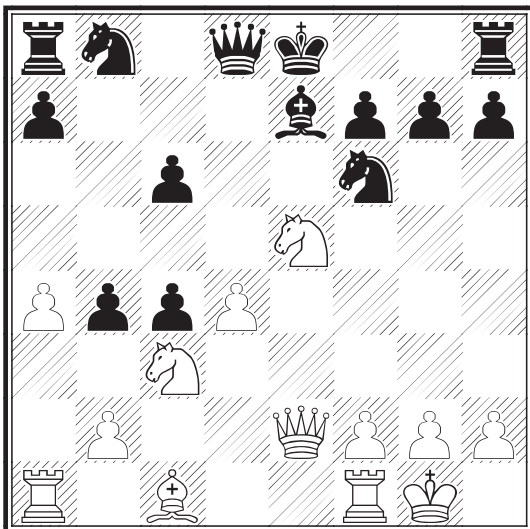
Allentown G/40 Swiss, Round 2, 2/16/2008

Annotations by Joseph J. Mucerino, Jr.

**1.e4 d5 2.exd5 Nf6 3.c4 e6 4.Nc3 exd5 5.d4 c6 6.Nf3 Bg7 7.Be2 Be7 8.O-O dxc4 9.Ne5 Bxe2 10.Qxe2 b5**

I tried to hang on to the extra pawn, but I was unsuccessful.

**11.a4 b4**



**12.Na2**

This is good, but even better is 12.Qxc4. I think we both missed the fact that Black cannot capture the Knight because of 13.Qxf7 mate!

**12...O-O 13.Qxc4 a5**

I hoped that White's Knight would be somewhat stuck on a2, but later on one of my knights would be trapped around there!

**14.Be3 Qd5 15.Rfc1 Rc8**

Fritz liked 15...Bd6 better.

**16.Bg5**

Threatening to capture on f6, and then d5, exploiting the pin down the c-file.

**16...Qxc4 17.Rxc4 Nd5 18.Bxe7 Nxe7 19.Rac1 f6 20.Nf3 Nd7 21.b3 Nb6 22.Rc5 Rd8 23.Re1 Kf7 24.Nc1 Rd5 25.Nd3 Rad8 26.Rec1 g6 27.Rxd5 Rxd5 28.Rc5 g5 29.g4 Ke6 30.Kf1 Nd7 31.Rc2 Kd6 32.Nb2 Kc7 33.Nc4 h6 34.Ke2 Kb7 35.Kd3?!**

Finally White makes a minor error.

**35...Nc5+ 36.Ke3 Nxb3 37.Ke4?! f5+**

Now Black is a bit better.

**38.gxf5 Nxf5 39.Ne3**

I thought this was a great move at the board, but I missed a simple tactic.

**39...Nxe3**

39...Nfxd4 is the way to win. If 40.Nxd5 cxd5+ wins a piece. I missed that in time pressure.

**40.fxe3**

Fritz claims this is equal; I would take White with his passed e-pawn.

**40...Na1??**

Time pressure again. The computer suggests 40...Rd8, but I did not want White's King to advance. The rest of the game was reconstructed.

**41.Rb2 Kb6 42.Ne1 Rd7 43.Rb1 Re7+ 44.Kd3 Rf7 45.Rxa1 Rf2 46.e4 Rxh2 47.e5 c5 48.Ke3 cxd4+ 1:0**

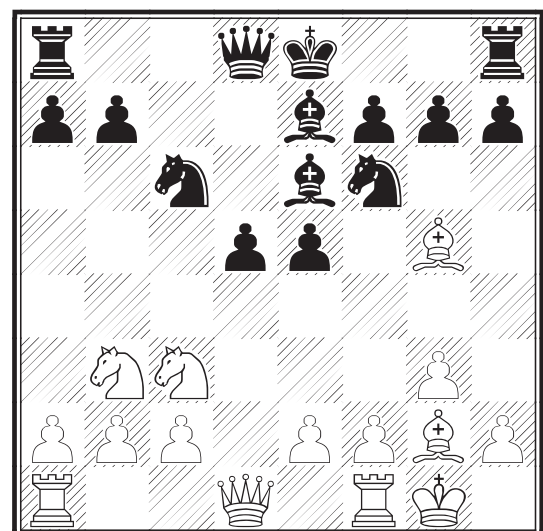
The following game comes from Volume II, No 2 of the Pittsburgh Chess Club's *Tuesday Night Bulletin*. In this new publication, editor Federico Garcia is doing a masterful job of recording the events, openings, enlightening games and interesting positions from the current instantiation of the Pittsburgh Chess Club's long-running series of weeknight tournaments. Readers are encouraged to play in these events or at least to pick up some of these newsletters when visiting the club.

### Hal Medrano - Michael K. Holsinger

Wild Card Open, Round 4, Pittsburgh, 8/5/2008

Annotations by Federico Garcia

**1.d4 d5 2.Nf3 c5 3.g3 cxd4 4.Nxd4 e5 5.Nb3 Nc6 6.Bg2 Be6 7.O-O Nf6 8.Bg5 Be7 9.Nc3**



White's hypermodern strategy is paying off. Black rushed to build an imposing pawn center, but now he finds it under tough pressure. The move 6...Be6 was already a concession, leaving b7 under the eye of the powerful Bishop at g2. But even so the center is fragile. Black can, and probably should, try something like 9...Ng4 10.Bxe7 Nxe7, although in that case c5 becomes an attractive post for White's Knight. The alternative, however, is to move one of the central pawns thus creating holes and making the center weak rather than strong. On 9...e4 the game could continue 10.Nb5! (with the idea of playing c3 in order to completely dominate d4) Qb6 11.N5d4 Nxd4 12.Qxd4 and White has paralyzed and conquered the center.

**9...d4 10.Ne4?!**

This loses a pawn. Better was 10.Bxf6! gxf6 11.Na4 aiming to go next to c5 hitting b7 and e6. In the game, White soon has full compensation for the pawn, but there was a way for Black to keep the advantage.

**10...Nxe4 11.Bxe7 Nxf2! 12.Bxd8**

Better is 12.Rxf2.

**12...Nxd1 13.Raxd1**

13.Bf6!? doubles Black's pawns, but the resulting central pawn mass might be dangerous.

**13...Rxd8?!**

Possible is 13...Nxd8! reinforcing b7.

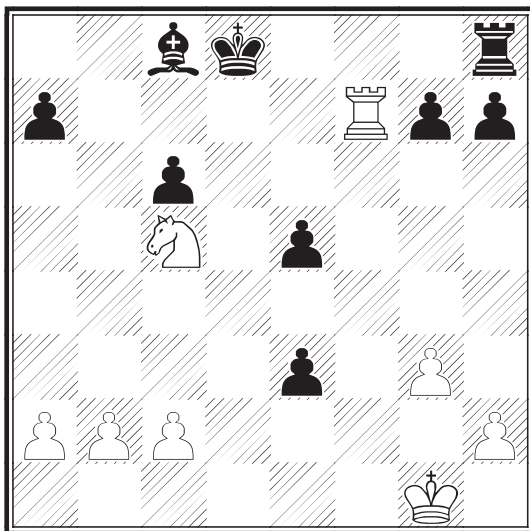
**14.Nc5! Bc8?**

Better is 14...Na5!, fighting for the initiative. The retreat of the Bishop removes Black's only active piece. Now White enjoys all the open lines.

**15.e3! dxe3?**

Better is 15...Ke7, for example 16.Bxc6 bxc6 17.exd4 Rxd4 18.Rxd4 exd4 19.Nb3 Rd8 20.Rd1 d3 21.Rxd3 Rxd3 cxd3 c5!?, where Black is slightly better and with a timely gambit can ensure at least a draw.

**16.Bxc6+ bxc6 17.Rxd8+ Kxd8 18.Rxf7**



So, now White has complete compensation. The extra pawn is, at best, irrelevant. At worst, it can be a liability.

**18...Ke8 19.Rf3 e2 20.Re3 Bg4 21.Rxe5+ Kf7 22.Kf2 Rd8 23.Nd3**

The passed pawn is going nowhere.

**23...Kf6 24.Rc5**

From here to the end, White tortures Black with the weakness of the

c6-pawn, but not really with the intention of winning it. Instead by forcing Black to defend it, Black's pieces end up on bad squares. Eventually White does win a pawn, but it's the one on a7. Then the reason for not taking on c6 is clear, Black's own pawn is in his way - the Bishop will have a difficult time guarding the promotion square a8 when White's a-pawn advances.

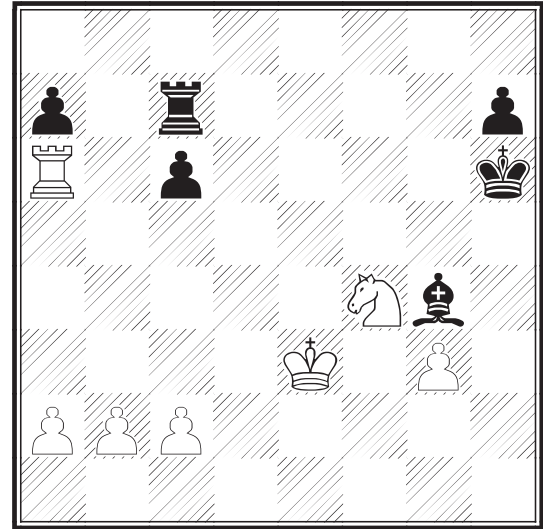
**24...Rd6 25.Rc4 Kg5?**

25...h5.

**26.h4+ Kh5 27.Nf4+ Kh6 28.Nxe2**

White is now clearly better.

**28...Rf6+ 29.Nf4 g5 30.hxg5+ Kxg5 31.Rc5+ Kh6 32.Ra5 Rd6! 33.Ke3! Rd7 34.Ra6 Rc7**



**35.Nd5 Rc8 36.Nb4 Kg5 37.Rxa7 h5 38.Ra5+ Bf5 39.Rc5 Kg4 40.Kf2**

40.a4.

**40...Be4?!**

The loose Bishop is a nuisance. And hanging onto the c6-pawn is not worthwhile. It is simply in the way, and the Black pieces will be tied to it forever. Black is lost.

**41.a4 Rd8 42.a5! Rd4 43.c3 Bf3? 44.cxd4 1:0**

## Charitable Contributions

by Tom M. Martinak

I would like to thank everyone who has donated their time and/or money over the last year to help chess in Pennsylvania. The PSCF accepts general donations, which besides allowing us to maintain our low membership rate of \$5/year, also help to support our scholastic and prison activities. There is space for including these donations on your membership renewal form. In each issue of our publications, we include a listing of those donating in the *PSCF Governance* section on page 15.

We will also set up funds for specific purposes. We currently accept donations for the promotion of senior chess activities. Just be sure to mark "Welsh S. White Fund" on your check, make it out to PSCF, and send it to PSCF, C/O Tom M. Martinak, 25 Freeport St., Pittsburgh PA 15223-2245. We have also accepted donations for the Greater Philadelphia Junior Invitational. Since we are a 501(c)(3) organization, all donations to us are tax deductible.

Other chess groups across Pennsylvania also provide ways for you to support worthy causes. In the east, Dan Heisman has set up an endowed fund with the Philadelphia Foundation (<http://www.philafound.org/>) to provide support for scholastic chess in the Philadelphia area. Instructions on how to donate either online or by mail, are available on his website (<http://www.danheisman.com>) under "Charitable Donations Page".

Out west, the Pittsburgh Chess Club has begun a Memorial Chess Fund with the mission of providing chess teaching, equipment and literature to a variety of worthy target areas including veterans, the blind, deaf or mute, seniors, handicapped and disadvantaged youth and youth at risk. The entire gift will go towards providing sets, boards, books, videos, etc. with teaching provided by volunteers. Send your donations to the Pittsburgh Chess Club, Attention: James Szurek, 5604 Solway St. Room 209, Pittsburgh PA 15217. Memo your check "Memorial Chess Fund" and be sure to list who is to be memorialized. Those so honored will be listed regularly in their newsletter *En Passant*. This is a great way to memorialize friends and family while helping those in need.

Also, in order to provide general support for the Pittsburgh Chess Club activities, they are holding a "Casino Night" fundraiser at the LeMont Restaurant on November 20, 2008. There will be terrific food, professionally-run table games, prizes, and a big-screen TV to watch the Steelers vs. Bengals game that evening. And of course there will be LeMont's fantastic view overlooking Pittsburgh from atop Mt. Washington. The event will take place from 6:30 until about 10 pm (or the end of the Steeler's game). There will be hors d'oeuvres for the first 45 minutes, followed by a buffet style dinner including roast beef, turkey breast, pasta, salads and breads. Tickets are \$50, which includes all of the food, and are tax deductible.

## Western PA Interscholastic Chess League

2007-08 Season	1	2	3	4	5	6	7	8	W-L-D
1. Canonsburg Middle	x	1	0F	1	1	1	1	1	6-1-0
2. North Allegheny Intermediate	0	x	1	½	1	1	1F	1F	5-1-1
3. W. PA School for the Deaf	1F	0	x	½	1	½	1	1	4-1-2
4. Vincentian	0	½	½	x	½	0	1	1	2-2-3
5. Oakland Catholic	0	0	0	½	x	1	0	1	2-4-1
6. Sewickley Academy	0	0	½	1	0	x	1	u	2-3-1
7. Baldwin	0	0F	0	0	1	0	x	u	1-5-0
8. Quigley Catholic	0	0F	0	0	0	u	u	x	0-5-0

Additional matches played but not counted in the above standings:

North Allegheny Intermediate	1-0	Central Catholic
Sewickley Academy	0-1	Mt. Lebanon
Central Catholic	0-1	Canonsburg Middle
Mt. Lebanon	0-1	North Allegheny Intermediate
North Allegheny Intermediate	1-0	Bethel Park
W. PA School for the Deaf	1-0	Bethel Park

### November 22 & 23, 2008 - Pittsburgh

Welsh S. White Pennsylvania State Senior Championship  
 Pennsylvania State Junior Championships

## Scholastic Corner

by PSCF SE Scholastic Coordinator Dan Heisman

Scholastic corner is aimed for players K-12, their parents, and scholastic sponsors/coaches. We like to address one column each year to sponsors and coaches to help them prepare their program for the school season. So if you are a scholastic player or parent and your sponsor/coach is not likely to receive this article, please copy or lend it to them or anyone else who could benefit! Thanks - this little effort might go a long way!

Before getting into PA-specifics, I would like to note that USCF's excellent scholastic website, including their Scholastic links, are located at <http://www.uschess.org/scholastic/> and <http://main.uschess.org/content/blogsection/27/131/>. At this site is their booklet, *A Guide to Scholastic Chess*, at <http://www.uschess.org/scholastic/2003SCguide.pdf>. If you have not seen this, it is a great idea to download it, and print it out or browse through it to keep in mind where to find this helpful information. For the parents there is my book *A Parent's Guide to Chess*: contact me at 610-649-0750 or [danheisman@comcast.net](mailto:danheisman@comcast.net).

I coordinate a tax-deductible scholastic support fund at the Philadelphia Foundation (<http://www.philafound.org>) for scholastic chess in the Philadelphia area. This fund is administered via the PA State Chess Federation and depends on donors like yourself. We appreciate - and depend upon - your contributions to local scholastic chess. If interested, please go to [http://danheisman.home.comcast.net/~danheisman/Main\\_Chess/donations.htm](http://danheisman.home.comcast.net/~danheisman/Main_Chess/donations.htm) and follow the instructions for online or regular mail donations. Thanks!

**I would urge every school sponsor to prepare a "start of the year" handout and disseminate it to all of the students (and parents!) who attend his/her chess program.** This handout can have two parts - one part can be specific to your program, but the second part should be generic and similar within all programs: it should contain information on what the main events are this year, and where to get more information about scholastic events and improvement. The following information should help you get started:

Web sites (all of these have many pages useful to both you and your students):

- US Chess Federation: <http://www.uschess.org/>
- PA State Chess Federation: <http://www.pscfchess.org/>
- SE PA Scholastic Chess Coordinator: <http://www.danheisman.com/> - a clearinghouse site for chess near Philadelphia. Includes the award winning "Best Instruction" column on getting better at chess: [http://mywebpages.comcast.net/danheisman/Articles/Novice\\_Nook\\_Links.htm](http://mywebpages.comcast.net/danheisman/Articles/Novice_Nook_Links.htm)
- Silver Knights Chess: NM Adam Weissbarth: <http://www.silverknightschess.com/>

Dates of interest for PA Scholastic Chess in 2007-2008:

- November 22&23, 2008 - PA Junior Championship - University of Pittsburgh
- Early December - Greater Philadelphia Scholastic Championship
- December 12-14, 2008 - National K-12 Grade Championships - Lake Buena Vista, FL <http://main.uschess.org/tournaments/2008/k12/>



- March 6-8, 2009 - PA State Scholastic Chess Championship - Carlisle, PA - 120+ trophies!
- April 3-5, 2009 - Supernationals in Nashville Tennessee - included Elementary, Middle School, and High School Championships all at one site! - <http://www.supernationalsiv.com/>
- June 2009 - Greater Philadelphia Junior Invitational (\$2000 in prizes in 2008)
- Summer/Fall 2009 - PA State Chess Championship (for all ages but normally includes a Scholastic section)

More detail on all of these events is available at the above web sites. A primary site for PA State Championship events is <http://www.pscfchess.org/clearinghouse/>. Alternately, you can go to the USCF web site and via the "Clubs and Tourneys" and "Upcoming Tourneys" links can see all of the upcoming USCF-rated events. Or for SE PA events, you can go to <http://www.danheisman.com/> and click on "Tournaments". And all these events are listed in detail monthly in the back of Chess Life, in their Tournament Life Announcement section.

"Give a man a fish and you feed him for a day. Teach him how to fish and you feed him for a lifetime." This quote is attributed to Lao Tzu, the famous philosopher. Use it for acquiring information about where to play chess: **Teach your students how to find events and chess information and then they can share the information with others in your group.**

Many coaches allow their players to "start at the top", which is a tough way to learn. By this I mean that they encourage their players to only play one or two championship events a year, like the PA State Scholastic Championship, this year again at the Hotel Carlisle and Convention Center. This approach is somewhat like expecting your football or basketball players to only play in the PIAA playoffs but not play in normal leagues. There are many scholastic (K-12) clubs and events all over the state. Tournaments are held throughout the year, including the Silver Knights events around the Delaware Valley, the PSCF-CCP in Philadelphia, and many in the Pittsburgh area run by Jerry Meyers and Tom Martinak. Larger tournaments are broken into sections to support all abilities, so everyone is competitive. Playing in scholastic events before the championship events is great preparation for your players and teams. These events can be found at the above web sites and also via scholastic e-mail lists. To get on my SE PA scholastic e-mail list, send an e-mail to [danheisman@comcast.net](mailto:danheisman@comcast.net); for Tom, it is [martinak\\_tom\\_m@hotmail.com](mailto:martinak_tom_m@hotmail.com); for Steve McLaughlin it is [piecebreaker@hotmail.com](mailto:piecebreaker@hotmail.com).

It is also a good idea to let the older (above elementary) students know that not only can they play in those scholastic events, but they are usually welcome at local clubs, and at "open" tournaments for all ages. Especially enticing are events like the PA State Championship (which also has a scholastic section), the large National Chess Congress in Philadelphia over Thanksgiving weekend, which has about a dozen sections to accommodate all players from master to beginner, and the Greater Philadelphia Open Championship. It is no coincidence that at these all-age events you always see students from many-time National HS Champion Masterman. They have one of the best scholastic chess programs in the US, partly because coach Steve Shutt encourages his players to play in the top events, scholastic or not.

If a sponsor/coach does not want to "send" his players to these events, at least he should let them know that these events exist – *I was once a high school student who would have loved to have played organized events outside my school but I did not know about them*, so I am very

sympathetic to those in that situation now. Therefore, as much as possible, coaches and sponsors should let their students know there is a whole world of chess eager to welcome them outside of their local team or league! And don't let anyone tell you that "You are not good enough" – often tournament directors have to return "unrated" trophies for recycling because players who have not played before are improperly discouraged from coming to events and no new players show up to get the trophy! One good way to start is to show players how to find events and let them know that these events are run by the swiss system, meaning that *no one is eliminated* and everyone gets to play all the games.

Final note on events with team trophies: Most individually-paired scholastic chess tournaments (as almost all are) also offer team trophies. In general, *the more players you bring to these events from your school, the better chance you have of winning a team trophy*. And you do NOT have to be on your school's official chess team (if there is one) to play on your school team at most scholastic chess events since there is no upper limit on how many of your school can attend. The more the merrier! So everyone come out and represent your school (or club).

## Mucerino Releases Entire Game Collection

by Joseph J. Mucerino, Jr.

Three years ago, when I purchased my Dell computer, I knew that one of the programs that I simply had to have for it was Chessbase. From the day it arrived in the mail, I have spent hundreds, perhaps over a thousand hours entering every tournament game that I have ever played. Such a massive effort should not be exclusively used by just one person; it should be enjoyed by all. Therefore, I have decided to release my games to the public.

Exactly what is in my game collection? There are over 2,600 games played against over 1,100 different opponents from 40 states and 19 foreign countries, from Deepak Aaron to Scott Zrinski, from unrated players to six different International Grandmasters. Inside of Pennsylvania, I have played in 59 different towns, from Pittsburgh to Philadelphia and from Allentown to Wyomissing. Such diversity has enabled me to probably play against more contemporary Pennsylvania chessplayers than anyone else. My game collection contains games played against 72 of the 99 highest rated Pennsylvanians from the October 2008 PA Top 100 rating list (I cannot play against myself, of course), including 26 opponents ranked in the top 30 and seven of the top ten. Against the top 100 juniors in Pennsylvania (from the October 2008 PA Top 100 Junior rating list), I have rubbed shoulders with 23 of the 30 best juniors, including everyone ranked in the top eight!

The good, the bad, the ugly, and the even worse are all here. These games are in the public domain, and are to be used for entertainment or instruction. They, along with files from other Pennsylvanians, are available online at:

<http://www.pscfchess.org/games/>

If you catch any errors (and I am sure that there must be errors with such a massive work) please report them to me.

*(So far, collections from Dan Heisman and myself have also been added. Anyone else interested in contributing their own game collection should contact me at [martinak\\_tom\\_m@hotmail.com](mailto:martinak_tom_m@hotmail.com). Pgn format is preferred, but I can probably convert most other file types. - editor)*

## “A Look Back at the Year 2007”

Compiled by Joseph J. Mucerino, Jr.

Another year has ended, and a new one has begun. Once again, we will take a moment to look back at the memories we made in 2007.

### January 2007

\*Greg Nolan began the year by winning the 12<sup>th</sup> Annual Rausch Memorial at St. Luke's Lutheran Church in Allentown.

In Pittsburgh, at the 9<sup>th</sup> Tri-State Junior Open, the sectional winners were:

<b>Championship:</b>	Bobby Steen
<b>Premier:</b>	Alex Chen & Justin Maga
<b>950-1049:</b>	Tyler Cai
<b>825-949:</b>	Benny Gentzel
<b>675-824:</b>	Laura Benzing
<b>550-674:</b>	Alexander Lucci
<b>Grades 5-12 Beginner:</b>	Peter Gaylor & Evan Turner
<b>Grades 3-4 Beginner:</b>	Eishan Ashwat, Adam Tucker & Caleb Hobart
<b>Grades K-2 Beginner:</b>	Anthony Mauro & Colin O'Donohoe

\*Winners of the 39<sup>th</sup> Annual Liberty Bell Open in Philadelphia were:

<b>Open:</b>	Jaan Ehlvest, Alexander Ivanov 5½/7
Top PA:	Alexander Shabalov, Bryan Smith 5
<b>U2200:</b>	Udayan Bapat, 6
Top PA:	Luan Elezi 5½
<b>U2000:</b>	Christopher Ventura, Gary Rubright 5½
Top PA:	Rubright
<b>U1800:</b>	Teme Sejko 6
Top PA:	Sejko
<b>U1600:</b>	Tim Alles 6
Top PA:	Alles
<b>U1400:</b>	Christian Zarate 6
Top PA:	David Blumin 5½
<b>U1200:</b>	Gabrielle Rivkin, Mark Melvin, Timothy Wolf 6
Top PA:	Melvin, Wolf

\*James Joline, Russell Palkendo, David Lee, and Lawrence Tremmel were quad winners in Clarks Summit.

### February 2007

\*THE WASHINGTON CHESS CLUB (Joseph Busche, Joseph Elsleger, Stuart Keckler, and Joshua Mankey) won the PA State Team Championship West in Pittsburgh. MOHIGANS (Arpan Prabhu, Tudor Crihalmeanu, Neel Madhavan and Jonathan Hensel ) won the Scholastic Reserve.

\*Evan Post won the quad at the Community College of Philadelphia, while Jerome Nicholson and Gus Tolson won the top scholastic section and Blerim Cenaj and Israel Riley split the lower scholastic section.

\*Manuel Sepp was the winner of the Montgomery Youth Chess Club event in Wyncote. Steve McLaughlin, Jr. and Yuhao Xu split the speed tournament.

\*Gabriel Tkach swept the K-3 section at the February Freeze tournament in Jenkintown. Vijay Friedman also posted a perfect score in the K-8 section.

\*Winners of the Pittsburgh Scholastic Championships were:

<b>6-12 Championship:</b>	Grace Dorohovich
<b>6-12 Advance:</b>	Arpan Prabhu, Brett Jones, Yiming Song, Ainesh Ravi
<b>6-12 Intermediate:</b>	Nathan Wiest
<b>6-12 Beginner:</b>	Benjamin Peters, Jesse Griffin, Alissa Liachenko, Richard Gayler
<b>K-5 Championship:</b>	Ben Molin
<b>K-5 Intermediate:</b>	Roman Cano, Henry Novara
<b>4&amp;5 Beginner:</b>	Brian Martine, Luke Vollmer
<b>2&amp;3 Beginner:</b>	Colin O'Donohoe
<b>K&amp;1 Beginner:</b>	Owen Gong

\*Quad winners at the MasterMinds tournament in Philadelphia were David Paulina, Joseph Mucerino, Quentin Guy, and Daniel Bell. Walter Fu won the Scholastic U1100 section, and Morris Saxe-Smith swept the Scholastic K-6 U750 section.

\*Franklin Chen finished two full points ahead of the field at the 67<sup>th</sup> Pittsburgh Chess Club Championship.

\*Joseph Mucerino and Eric Funk shared first place in section one of the NPCC Winter Round Robin in Lansdale. John Frisk and Joseph Kennedy tied for top honors in the second section. And there was another tie in the bottom section between Jeffery Kleinfeld and George Murphy.

\*At the February Blizzard event in Southampton, Gabriel Tkach and Christopher Buss both posted 4-0 scores in the K-3 section, while Philip Repisky was the clear winner of the K-8 section.

### March 2007

\*Michael Bury won the West Chester Chess Club Championship.

\*Gerald Bailleau won the Pennsylvania State Quick Chess Championship for the fifth year in a row. Cory Ruck, Alex Chen, Samuel Lamonto, and Daniel O'Brien all tied for the U1500 title. Frankie Chan swept the U1100 section.

\*Winners at the Pennsylvania State Scholastic Championship were:

<b>K-12 Open:</b>	Daniel Yeager
Top school:	Julia R Masterman School
Top club:	Montgomery Youth Chess Club
<b>7-12 U1300:</b>	An Nguyen, Brad Elias
Top school:	Pocono Mountain East High School
Top club:	Monroeville Chess Club
<b>7-12 U1000:</b>	Jua Thomas, Robert Kim, Derrick Kuhn
Top school:	High School of Engineering & Science
Top club:	Chambersburg Chessmen
<b>K-9 U1000:</b>	Andre Curtis
Top school:	Providence Heights Alpha School, Pocono Mountain East Intermediate School
Top club:	Monroeville Chess Club
<b>K-8 Open:</b>	Peter Weida
Top school:	Julia R Masterman School
Top club:	Montgomery Youth Chess Club

**K-6 Open:** Danny Balter  
 Top school: Murray Avenue School  
 Top club: Huntingdon Valley Chess Society Juniors

**K-6 U800:** Natan Luehrman, Jack Mo, Daniel Warszawski,  
 Ruben Ramanathan

Top school: The Philadelphia School, Julia R Masterman  
 School

Top club: Challenging Heads

**K-3 Open:** Alexander Zhang  
 Top school: The Philadelphia School  
 Top club: Challenging Heads

\*Federico Garcia took clear first place in the Carlisle Open; Ernest Sharif and Marc Miller tied for the top spot in the U1500 section.

\*Craig Schneider was crowned the Erie City Champion.

\*In Radnor, Carter McCutchan won the K-3 section of the March Mirage, while Praneeth Denduluri and Gabriel Tkach shared top honors in the K-8 section.

\*Leteef Street won the MasterMinds Chess Club Championship in Philadelphia.

\*The K-3 section of the March Blast tournament in King of Prussia was won by Kyler Shinkle-Stolar, while Atharva Deshpande and Josh Neal split the K-8 section.

#### April 2007

\*FM Robert Sulman was the winner of the Pennsylvania State G/29 Championship in Pittsburgh, while Austin Henninger and Maria Hoffman split the Scholastic section.

\*Quad winners in Haverford were Leteef Street, Adolfo Cuesta, and Kimberly Ding. Teme Sejko swept the Scholastic Swiss.

\*Gabriel Tkach had a perfect 5-0 score in the G/30 Chess Academy in Feasterville, and Shawn Chen had the same score in the U800 section.

\*Joseph Mucerino and Vincent Waters tied for first at the Danville Open.

\*Robert Jones won the Coatesville Third Saturday Swiss.

\*Bryan Smith dominated the Greater Philadelphia Open Championship in Haverford. Glenn Buyo won the U1800 section, and Judah Bloom and Sebastian Lara shared top honors in the U1400 section.

\*Sectional winners of the Northern Regional Scholastic Chess Championship at Transfiguration School in Western PA were:

**Championship:** Kevin Mo  
**Premier:** Benjamin Plaut  
**850-999:** Nathan Meyers  
**675-849:** Harishwer Balasubramani  
**525-674:** Morgan Lea McMurdy  
**Grades 7-12 Beginner:** David Donohoe  
**Grades 4-6 Beginner:** Robert Vaerewyck & Nathaniel Dick  
**Grades 2&3 Beginner:** Caleb Groce & Elliott Norman  
**Grades K&1 Beginner:** Vishan Chaudhary

\*Joseph Mucerino won the Harrisburg West Shore Chess Club Championship in Lemoyne for the fourth straight year.

\*Bryan Smith posted a perfect score in the open section of the April Showers tournament in Brwn Mawr. Manuel Sepp did the same thing in the K-8 section, and so did Pranav Ranganathan in the K-3 division.

\*Bernard DeLuca took the Gino Merli Open in Clarks Summit.

\*Bruce Leverett and Cory Bryant both had perfect scores at the SCI-Somerset tournament in Somerset.

\*Luka Glinsky was the winner of the Golden Triangle Open, and Joseph Kamon won the Reserve section.

#### May 2007

\*Richard Harry won the Pennsylvania State Amateur Championship. Jaime Yang and Susanne Winkleman both posted perfect scores in the Scholastic section.

\*The quad winners in Huntingdon Valley were Joseph Kovacs, Brandan Holmquist, and Seth Furman.

\*Rodion Rubenchik took clear first at the Chaturanga Spring Swiss in Hatboro.

\*Joseph Mucerino defeated Alex Guziak in match play in Wyomissing. Matthew Berman swept a quad at the same time.

\*In Doylestown at the May Rumble, John Fleming was perfect in the K-3 section, as was Jenny Zhang in the K-8 section. Adam Weissbarth and Gennadiy Geyler tied for first in the Open section.

#### June 2007

\*Sectional winners at the North Penn Chess Club Spring Double Quads in Lansdale were Nigel Mitchell, Robert Kampia, and John Frisk.

\*Alexander Wlezien and Raven Wake were crowned Blair Bishops Club Co-Champions in Philadelphia.

\*Joseph Mucerino won the Hazleton Open.

\*Alexander Matros swept the 37<sup>th</sup> Fred Thompson Memorial in Pittsburgh, while Dale Lipinski and Mikhail Oet shared the Reserve section.

\*In the 14<sup>th</sup> Western PA Scholastic Chess Championship, sectional winners were:

**6-12 Championship:** Kevin Mo  
**6-12 Intermediate:** Ezra Etzel  
**6-12 Beginner:** Eli Frye  
**K-5 Championship:** Kemen Linsuain  
**K-5 Intermediate:** Irina Cihalmeanu & Yifeng Ding  
**4&5 Beginner:** Nathanel Dick, Ben Garness & Simon Lipsky  
**2&3 Beginner:** Jake Spence  
**K&1 Beginner:** Nikolas Mustian

\*Winning their divisions at the Western PA Junior Open were:

**Open:** Ben Molin  
**U1200:** Ezra Etzel  
**U900:** Anish Manocha  
**U700:** Mark Ishler  
**U500:** Daniel Pan

\*Dan Yeager swept the Greater Philadelphia Junior Invitational.

### July 2007

\*World Open winners in King of Prussia were:

**Open:** Varuzkan Akobian (playoff winner), Alexander Stripunsky, Hikaru Nakamura, Sandipan Chanda, Leonid Yudasin, Evgeny Najer, Victor Mikhalevski, Alexander Shabalov, Julio Becerra 6½/9

Top PA: Shabalov

**U2400:** Mikhail Zlotnikov, Tegshsuren Enkhbat, Anton Del Mundo, William Morrison, Ilye Figler 7

Top PA: Daniel Yeager 6

**U2200:** Chris Mabe 8

Top PA: Tegrun Shadoyan 6

**U2000:** Sevan Toroussian 8½

Top PA: Derek Fisher 6

**U1800:** Steve Cramton 8½

Top PA: Anatoliy Popov, Benjamin Fisher, Stuart Keckler 5½

**U1600:** Nicholas Oblak 8

Top PA: Luis Caicedo 5½

**U1400:** Crystal Liu, Dru Knox 7½

Top PA: Yuhao Xu, Mayen Bior 6½

**U1100:** Ian Morton 8

Top PA: Patrick Donnelly 6½

\*The July Joust was held in Radnor. Sectional winners were: K-3 Joshua Hagerty, K-8 Zhenhao Li, Open Gabriel Tkach and David Teske.

\*Robert Sulman had a perfect score at the Pennsylvania State Action Championship in Pittsburgh. Anthony Ciarlante was equally dominant in the Scholastic section.

\*Tom Magar and Herman Chiu split the Johnstown Open.

\*Peter Minear won the 38<sup>th</sup> Susquehanna Valley Open in Bloomsburg.

\*Dan Yeager won the blitz tournament at the U.S. Open in Cherry Hill, New Jersey.

### August 2007

\*Alexander Shabalov tied for first at the U.S. Open in Cherry Hill, New Jersey.

\*Jack Mongilutz swept a Swiss in Allentown.

\*Winners at the Holly Heisman Memorial in Wynnewood were: Dan Yeager (Open), John Callan (U1500), and Alexander Wlezien (U900).

\*Octo champions at the PCC Summer Open in Pittsburgh were: Alexander Heimann, Dale Lipinski, Timothy Crowell, Joshua Mankey, Daniel Seamans, Kent Weber, and Dmitriy Redkin.

### September 2007

\*Mark Heimann tied for first at the 63<sup>rd</sup> Ohio Chess Congress in Dayton, Ohio.

\*Larry Saxby won the Summer's End Swiss in West Chester.

\*Greg Nolan had a perfect score at the Show Your Moves Super-Swiss in Allentown.

\*In Philadelphia, winners at the ASAP event were Leteef Street, Carlos Santiago, David Trinidad, Akmal Kholbaev, and Akbar Kholbaev.

\*Richard Mitchell and Brian Pitzer won their quad in Erie.

\*Sectional winners at the Meadow Brook Swiss were Jeddkeen Tam (K-2), David Dawson (K-4), David Grigoryan, Joseph Kovacs, I Mitchell Harmatz, and Joshua Pilchik (K-6), and Michael Levin (K-12).

\*At the Greater Pocono Scholastic Championship in Swiftwater, Henry Luo and Alex Belkin tied for first in the K-12 Championship, and Anthony Ciarlante was clear first in the K-12 U1000 section.

### October 2007

\*Joseph Mucerino and Preston Ladson tied for first place at the North Penn Chess Club Membership Drive in Lansdale.

\*Tom Magar won the Western PA Open in Pittsburgh. Matthew Beyerl swept the Premier section, and Gregory Kaniecki took top honors in the Scholastic section.

\*Twenty people showed up for the David Elliott Memorial Quads in Allentown, and only Derek Fisher could register a perfect score.

\*The Pennsylvania State Championship was held at Haverford, with Bryan Smith winning the title. Sharing first place in the U1800 section were Mel Ross, David Sherman, and Joseph Kennedy. Alex Bury was the sole winner of the U1400 section.

\*Adam Weissbarth won the Chaturanga Chess Club Championship.

\*At the Delaware Valley Grand Prix tournament in Warminster, Steve McLaughlin, Jr. won the top section, and Joshua Pilchik won the lower section.

\*Dan Yeager won the Main Line Chess Club Championship.

### November 2007

\*At the Future Champions Chess Challenge in Pittsburgh, winners were:

<b>Championship:</b>	Daniel Priore
<b>Premier:</b>	Kevin Xie
<b>875-999:</b>	Vijay Viswanathan & David Tobias
<b>750-874:</b>	Eli Frye
<b>K-5 Intermediate:</b>	Simon Lipsky
<b>6-12 Beginner:</b>	Tadas Antanavicius, Alssa Liachenko, Harry Song & Krishna Neel
<b>3-5 Beginner:</b>	Antonio Ascencio
<b>K-2 Beginner:</b>	Steven Keelon

\*There were eleven sections at the West Chester Quads, perhaps a record.

\*Justin Ferri was the winner of the Varsity section at the 16<sup>th</sup> Sewickley Academy Championship. William Keller and Jared Washington shared the Primary K-3 section.

\*The 3<sup>rd</sup> Providence Heights Alpha C tournament was held in Allison Park. The winners were: Varsity: Michael El Kadi; JV Tier B: Justin Ferri and Danny Fujito; JV Tier C: Erich Barth; Sup Nov E: Michael Niggemyer; Sup Nov F: James Walton.

\*Tamara Corey was the only person with a perfect score at the 2<sup>nd</sup> Annual B-E-H-J Team Match in Bradford.

\*William Hughes was crowned PA Senior Champion in Pittsburgh.

\*Still in the Steel City, at the PA Junior Championship, the sectional champions were:

<b>Ages 13-20:</b>	David Owocki
<b>Ages 9-12:</b>	Kevin Mo
<b>Ages 8 and under:</b>	Sean Senft
<b>U900:</b>	David Patuwo
<b>U600:</b>	Nathan Wang and Ellen Leibowitz

\*Results of the 38<sup>th</sup> National Chess Congress:

<b>Premier:</b>	Darmen Sadvakasov 5½/6
Top PA:	Sadvakasov 5½
<b>U2200:</b>	Ryan Thurlow 5½
Top PA:	Luan Elezi 4½
<b>U2000:</b>	Josh Bowman, Paul Howe, William Van Lear, Douglas Burgwin 5
Top PA:	Bowman, Howe, Burgwin 5
<b>U1800:</b>	Ronald Stewart, Yuval Shemesh 5½
Top PA:	Herman Setyadarma 4½
<b>U1600:</b>	William Graif 5½ (the largest section with 80 players)
Top PA:	Christopher Persons, Yuaho Xu 5
<b>U1400:</b>	Adonis Turner 6 (the only perfect score!)
Top PA:	Turner 6
<b>U1200:</b>	Valeriano Magat 5½
Top PA:	Eric Guo 5
<b>U1000:</b>	Ashustosh Ailani, Joie Wang, Jay Regam 5
Top PA:	Regam 5
<b>U800:</b>	Matthew Saunders, Mitchell Starominsky 4½
Top PA:	Saunders, Starominsky 4½
<b>U600:</b>	Kajal Patel 5
Top PA:	Benjamin Lu 4½
<b>Unrated:</b>	Dylan Ruggiero, Maste Miller, Marc Di Costanzo 5
Top PA:	Ruggiero 5

### December 2007

\*Alexander Heimann swept Grade 9 at the National Grade Level Championship in Houston, Texas.

\*Division winners at the Winter Warm-Up in Horsham were: K-3 Max Polichuk, K-8 Evan Betzenberger, Open: Joseph Mucerino.

\*Rahul Ghai won the December Blizzard in Bethel Park.

\*Daniel Yeager won the Coatesville Third Saturday Swiss.

\*In Pittsburgh, at the 10<sup>th</sup> Tri-State Junior Open, the winners were:

<b>Championship:</b>	Kevin Mo
<b>Premier:</b>	Kevin Xie
<b>950-1049:</b>	Sam Gershanok
<b>825-949:</b>	Evan Turner
<b>675-824:</b>	Andrew Mao & Justin Ferri
<b>550-674:</b>	Richard Gaylor
<b>Grades 5-12 Beginner:</b>	Justin Williams, Zachary Hinkle & Gabrielle Smith
<b>Grades 3-4 Beginner:</b>	Isaac Rogers
<b>Grades K-2 Beginner:</b>	Steven Keelon & Josh Frantz

\*Jack Mongilutz was the winner of the Crazy Pairing Swiss in Allentown.

*What a year!*

## UPCOMING PSCF EVENTS

### A Heritage Event

**November 8 & 9 GPP:10 Pennsylvania 2008 Pennsylvania State Championship.** Plumbers & Pipefitters Union Hall, 7193 Jonestown Rd., Harrisburg PA 17112. 4 sections. **2-day Sections:** 5-SS. G/120. Reg 9 - 9:30am. Rds Sat 10am - 2:30pm - 7pm, Sun 10am - 2:30pm. **Open**, open to all: EF: \$40 by 10/23, \$50 later. \$\$ (680 Guaranteed): 350-150, U2100 \$70, U2000 \$60, U1900 \$50. **Premier**, open to those rated under 1800: EF: \$30 by 10/23, \$40 later. \$\$ (420 b/20): 150-90, U1700 \$70, U1600 \$60, U1500 \$50. **Reserve**, open to those rated under 1400: EF: \$20 by 10/23, \$30 later. \$\$ (280 b/20): 100-70, U1200 \$60, U1000 \$50. **Saturday-only Scholastic**, open to those in grades K-12 rated under 1000 or unrated: 5-SS. G/30. Reg ends 11:30am. Rds Noon - 1:15pm - 2:30pm - 3:45pm - 5:30pm. EF: \$15 by 10/23, \$25 later. Trophies to Top 5, Top 2 U600, Top 2 U300, Top 2 Unrated; Trophies to top 2 schools. (Any number may be on a team, team score is sum of top 4 scores.) **All:** PSCF required \$5 OSA. **HR:** Mention "PSCF". 1-4 per room: \$63 by 10/23. Super 8 Motel - Harrisburg/Hershey NW, 7500 Allentown Blvd., Harrisburg PA 17112, 717-652-0101. **Local Info:** slam.dk@verizon.net, 717-730-4461. **TD:** martinak\_tom\_m@hotmail.com, 412-908-0286. **Ent:** PSCF, c/o Tom Martinak, 25 Freeport St., Pittsburgh PA 15223-2245. Checks payable to PSCF.

**November 22 & 23. 2008 Welsh S. White Pennsylvania State Senior Championship.** 5-SS. G/120. Dining Room A, 1st Floor, William Pitt Union, Univ. of Pittsburgh, 5th Ave. & Bigelow Blvd., Pittsburgh PA 15213. **Open to ages 50 & Up.** \$\$ (450G): 150-80, Ages 65 & Up \$70, U1800 \$60, U1600 \$50, U1400 \$40. Trophies to Champion & Top Ages 65 & Up. **EF:** \$25 postmarked by 11/14, \$35 later, PSCF required \$5 OSA. Reg ends 9:30am. Rds 10am - 2:30pm - 7pm, 10am - 2:30pm. **Info:** martinak\_tom\_m@hotmail.com, 412-908-0286. **Ent:** PSCF, c/o Tom Martinak, 25 Freeport St., Pittsburgh PA 15223-2245. Checks payable to PSCF. *W. Sponsored & Organized by the PA State Chess Federation & University of Pittsburgh Chess Club.*

**November 22 & 23. 2008 Pennsylvania State Junior Championships.** 5-SS. 53 Trophies! (49 Individual, 4 Team) Assembly Room, Main Floor, William Pitt Union, Univ. of Pittsburgh, 5th Ave. & Bigelow Blvd., Pittsburgh PA 15213. 7 sections: **2-day (Sat & Sun):** Ages 16 to 20 Open, Ages 13 to 15 Open, Ages 9 to 12 Open. **EF:** \$18 postmarked by 11/14, \$28 later. Time Control: Game/90. Reg ends 9:30am. Rds: 10am - 1:30pm - 5pm, 11am - 2:30pm. **1-day (Sun only):** Ages 8 & Under Open, Ages 9 to 20 Rated U900, Ages 9 to 20 Rated U600 or Unrated, Ages 8 & Under Rated U600 or Unrated. **EF:** \$15 postmarked by 11/14, \$25 later. Time Control: Game/40. Reg ends 10:30am. Rds: 11am - 12:30pm - 2pm - 3:30pm - 5pm. **All:** Trophies to top 7 in each section, additional medallions. State Champion Title for each age in an Open Section. Trophies to 1st-2nd club and school teams combining 4-7 players from all sections. PSCF required \$5 OSA. **Info:** martinak\_tom\_m@hotmail.com, 412-908-0286, <http://www.pscfchess.org/pajuniorchamp/>. **Ent:** PSCF, c/o Tom Martinak, 25 Freeport St., Pittsburgh PA 15223-2245. Checks payable to PSCF. *W. Sponsored & Organized by the PA State Chess Federation & University of Pittsburgh Chess Club.*

Watch for the latest information on PSCF tournaments on our website:

<http://www.pscfchess.org/clearinghouse/>

# Top 20 Rated Pennsylvanians (As of the February 2008 Rating Supplement)

## Regular Rating

Rank	Name	Rating
1	Shabalov, GM Alexander	2703
2	Wolff, GM Patrick G	2623
3	Khmelnitsky, IM Igor N	2513
4	Zaitchik, GM Gennady	2500
5	Smith, IM Bryan G	2448
6	Kriventsov, IM Stanislav G	2442
7	Meyers, CIM Jerald	2345
8	Heimann, Mark A	2344
9	Yeager, Daniel A	2329
10	Rubenchik, FM Rodion V	2328
11	Leverett, Bruce W	2322
12	Ritvin, Stanislav	2277
13	Formanek, IM Edward William	2276
14	Melekhina, WFM Alisa	2275
15	Eidemiller, Mark B	2274
16	Bailleau, Gerald A	2271
17	Dunne, FM Alex	2267
18	Rogers, FM Norman	2266
19	Heimann, Alexander C	2264
20	Peterson, William M	2253

## Quick Rating

Rank	Name	Rating
1	Wolff, GM Patrick G	2625
2	Shabalov, GM Alexander	2622
3	Zaitchik, GM Gennady	2547
4	Khmelnitsky, IM Igor N	2432
5	Kriventsov, IM Stanislav G	2392
6	Meyers, CIM Jerald	2311
7	Smith, IM Bryan G	2280
8	Shocron, Rubin M	2259
9	Eidemiller, Mark B	2252
10	Bailleau, Gerald A	2228
11	Nolan, Gregory M	2220
12	Rubenchik, FM Rodion V	2207
13	Rogers, Norman	2202
14	Busche, Joseph R	2201
15	Bengtson, FM Matthew William	2187
16	Post, Evan A	2180
17	Sulman, FM Robert M	2167
18	Yeager, Daniel A	2156
19	Faust, Jeffrey S	2152
20	Kis, Lorand Bela	2150

## Women

Rank	Name	Rating
1	Melekhina, WFM Alisa	2275
2	Corey, Tamara H	1882
3	Jin, Shinan	1751
4	Mc Cullough Linver, Laura M	1707
5	Chu, Emily J	1635
6	Dorohovich, Grace L	1541
7	Lakata, Elizabeth M	1536
8	Mc Laughlin, Erica C	1516
9	Moolten, Odette	1455
10	Zhang, Yi Ran	1428
11	Kleinfeld, Linda K	1417
12	Procopio, Patti	1375
13	Regam, Jessica	1357
14	Davis, Erika	1313
15	Hendrickson, Sara M	1233
16	Yan, Amy	1214
17	Dorsey, Elizabeth A	1204
18	Kholbaeva, Nodira	1162
19	Seshadri, Priyanka S	1153
20	Lian, Shelley	1133

## Juniors - Ages 20 & Under

Rank	Name	Age	Rating
1	Heimann, Mark A	15	2344
2	Yeager, Daniel A	16	2329
3	Melekhina, WFM Alisa	16	2275
4	Heimann, Alexander C	15	2264
5	Petes, Gabriel N	16	2171
6	Glinsky, Luka E	16	2047
7	Bowman, Joshua A	16	1998
8	Guber, Michael	20	1959
9	Lynn, Bennett M	19	1957
10	Hsiao, Thomas	19	1908
11	Russell, Matthew C	20	1904
12	Sakai, Hibiki	13	1902
13	Guziak, Alex M	18	1896
14	Caligaris, Gage R	19	1853
15	Spore, Richard Andrew	19	1830
16	Ames, Evan B	16	1808
17	Oppenheim, Evan	16	1790
18	Blaise, Christopher S Jr	16	1778
19	Fisher, Benjamin E	15	1765
20	Smyth, Julian D	15	1762

## Seniors - Ages 65 & Up

Rank	Name	Age	Rating
1	Formanek, IM Edward William	65	2276
2	Dunne, FM Alex	66	2267
3	Shocron, Rubin M	86	2224
4	Fayvinov, Zakhar	75	2212
5	Getman, Vladimir S	68	2071
6	Ambrad, Antonio J	67	2000
7	Meigs, Donald J	68	2000
8	Pariseau, Richard J	66	1942
9	Hux, Robert E	78	1912
10	Sukiennik, Leopold J	71	1842
11	Mc Call, Brian A	65	1803
12	Leonards, Robert A	78	1800
13	Cintron, Rafael L	79	1800
14	Shafritz, Arnold B	81	1800
15	Prokhov, Vassil K	73	1800
16	Joline, James T	67	1761
17	Schmidt, Winsor C	88	1706
18	Rasitsan, Elya	73	1703
19	Foreman, Fred D	71	1700
20	Eikerenkoetter, Dr Roy C	76	1683

## Ages 50 & Up

Rank	Name	Age	Rating
1	Meyers, CIM Jerald	52	2345
2	Leverett, Bruce W	55	2322
3	Formanek, IM Edward William	65	2276
4	Dunne, FM Alex	66	2267
5	Shocron, Rubin M	86	2224
6	Martinak, Tom M	51	2212
7	Fayvinov, Zakhar	75	2212
8	Fielding, Paul T	56	2200
9	Magar, Thomas P	53	2200
10	Hughes, William M	59	2200
11	Bury, Michael James	58	2200
12	Nolan, Gregory M	53	2166
13	Cornell, Ray C	55	2099
14	Mongilutz, Jack	54	2088
15	Getman, Vladimir S	68	2071
16	Renk, Robert M	50	2066
17	Schneider, Craig W	50	2040
18	Leach, Charlie K	50	2024
19	Rubright, Gary W	50	2021
20	Thompson, Donald A	52	2012

# Pennsylvania Champions of 2007

**Champion:** Bryan G. Smith

**Action Champion:** Robert M. Sulman

**Game/29 Champion:** Robert M. Sulman

**Quick Chess Champion:** Gerald A. Bailleau

**Amateur Champion:** Richard L. Harry

**Senior Champion:** William M. Hughes

**Ages 65 & Up Champion:** Donald J. Meigs

**Collegiate Champion:** Andrew E. Tichenor

**K-12 Champion:** Daniel A. Yeager

**K-8 Champion:** Peter T. Weida

**K-6 Champion:** Danny Balter

**K-3 Champion:** Alexander Zhang

## Age Champions (from Pennsylvania Junior Championship)

18	David A. Owocki
16	Kent Berthoud
15	Adonis Turner
14	Jonathan Naser
12	Kevin Mo
11	Ben Molin
10	Krishna Patel
9	Rahul Ghai
8	Nikolas Mustian & Allison Zhang
7	Andrew Yang
6	Swathi Senthil

## Grade Champions (from Pennsylvania Scholastic Championship)

12	Bob C. Waruszewski & Michael A. Hickman
11	Alex M. Guziak
10	Christopher S. Blaise, Jr.
9	Benjamin E. Fisher
8	Nicholas M. Spokauskas & Shelley Lian
7	Jonathan Pfefer, Jacob Kelly, Gaibo Yan & Gus Tolson
6	David A. Lakata
5	Ben Molin
4	Odette Moolten, Jessica Regam & Krishna Patel
3	Rahul Ghai
2	Shira S. Moolten, Alejandro Budejen-Jerez & David Chen
1	Owen Baim & Jeddkeen Tam
K	Jonah Taranta & Wes Champlin

## PSCF GOVERNANCE

**PSCF Website:** <http://www.pscfchess.org/>

### PSCF Officers

**President & Editor:** Tom M. Martinak; 25 Freeport Street, Pittsburgh PA 15223-2245; 412-908-0286; martinak\_tom\_m@hotmail.com

**Vice-President - East:** Dr. Ira Lee Riddle; 34218 Anns Choice Way, Warminster PA 18974-3386; 215-674-9049; Iralee@aol.com

**Vice-President - Central:** Samuel M. Lamonto, Jr.; 1408 Walnut Street, Camp Hill PA 17011-3966; 717-730-4461; slam.dk@verizon.net

**Vice-President - West:** Bruce W. Leverett; 759 Lebanon Avenue, Pittsburgh PA 15228-1131; 412-561-3972; brucel@netapp.com

**Secretary:** Joseph J. Mucerino, Jr.; 108 Russell Avenue, Douglassville PA 19518-1119, 610-385-3751; patzerpounder@hotmail.com

**Treasurer:** Stanley N. Booz, CPA; 252 West Swamp Road Suite 39, Doylestown 18901; 215-345-6651; stanbooz@comcast.net

**Scholastic:** Steve J. McLaughlin, Sr; 2745 Pershing Avenue, Abington PA 19001-2202; 215-784-5938; piecebreaker@hotmail.com

**Western PA Scholastic:** Robert C. Ferguson, Jr.; 140 School Street, Bradford PA 16701; 814-368-4974; amchess@amchess.org

**SouthEastern PA Scholastic:** Daniel E. Heisman; 1359 Garden Road, Wynnwood 19096-3626; 610-649-0750; danheisman@comcast.net

**Philadelphia Scholastic:** Stephen D. Shutt; 871 N Woodstock St, Philadelphia 19130; 215-978-6867; StephenShutt@yahoo.com

**PSCF Historian:** Neil R. Brennen; 102 Bethel Road, Spring City PA 19475-3300; chesshistorian@hotmail.com

### PSCF Life Members

John H. Allen, Larry Bias, Howard Bogus, Rene Bonilla, Stanley N. Booz, Greg Borek, Christopher M. Burkemccandless, John Caliguire, Will Champion, Natal Carabello, Jeffrey J. Chrin, Steve Coladonato, Donald H. Conner, Mike Cox, Frank Cunliffe, Leroy Dubeck, Bob Dudley, Alex Dunne, Robert A. Eichelberger, Roy C. Eikerenkoetter, Robert Ferguson, Ryan Ferguson, Peter Fleischer, John Gibbons, Dan Heisman, Phillip Holmes, Joe Johnson, James Joline, Igor N. Khmelnitsky, Keith Kuhn, Mark D. Leberfinger, Tom M. Martinak, Allan Messinger, Andrew Metrick, Derek J. Modzelewski, Glenn R. Mohler, Randy Moyer, Joseph J. Mucerino, William Nast, Ross Nickel, Evan A. Post, Ira Lee Riddle, Stanley Robertson, Robert P. Ross, Michael Shahade, Michael M. Short, Jason A. Smith, Andrew Stergiou, Richard Stoy, Mike Styler, John V. Waters

### USCF Delegates

Tom M. Martinak, Ira Lee Riddle, Daniel E. Heisman, Rodion V. Rubenchik, Bruce W. Leverett

### USCF Alternate Delegates

Thomas P. Magar, Stanley N. Booz, Robert E. Brubaker, Eric C. Johnson, Adam Weissbarth

### Thank you for recent donations to the PSCF by:

Linda T. Alschuler & Samuel M. Lamonto, Jr.

*PSCF Annual* is the official annual publication of the Pennsylvania State Chess Federation. Advertising rates available on request. Material in this publication may be reprinted by other magazines as long as credit is given to both the author and to *PSCF Annual*.

Dues are \$5 for students/adults/clubs, \$100 for Life memberships. The PSCF is a 501(c)(3) non-profit organization, and donations are deductible to the extent allowed by law.

Address Corrections & PSCF Memberships should be sent to: Tom Martinak; 25 Freeport Street, Pittsburgh PA 15223-2245; 412-908-0286; martinak\_tom\_m@hotmail.com

**WHERE TO PLAY CHESS IN PENNSYLVANIA**

ANY CORRECTIONS/ADDITIONS/DELETIONS GRATEFULLY ACCEPTED

**ALLENTOWN**

- (1) Center City CC; St Luke's Lutheran Church, 417 N 7th St; Sat Noon-6 pm  
 (2) Lehigh Valley CA; St James Evangelical Lutheran Church, 710 N 11th St; Sat 12:30 pm, 610-821-4320

**ALTOONA**

Andrew Stergiou 814-941-8718

**BLOOMSBURG**

Kehr Union Bldg; Bob Ross 570-784-8571

**BRADFORD**

- (1) School Street Elementary; Wed 6:30-8:30 pm, Oct-Mar  
 (2) 78 Main St Fl 3; Sun 1-5 pm, Wed 6-10 pm Mar-Sept, 814-368-4197

**CARBONDALE**

Public Library; 5 N Main St; Thurs 6 pm, 570-282-2793

**CHAMBERSBURG**

Chessman; 600 Miller St; Mon 7-10 pm, 717-261-9132, 717-263-2836

**COATESVILLE**

Cultural Soc, 258 E Lincoln Hwy; Thurs 5-10 pm, Bob Jones 610-384-1790

**COUDERSPORT**

High School, 698 Dwight St; Fri 3-4:30 pm, Patrick Keeney 814-274-4428

**DOUGLASSVILLE**

Amity CC, St Paul's UCC, 1312 Old Swede Rd; Fri 7-10 pm, 610-385-6324

**DUNCANVILLE/ALTOONA**

Lois Kaneshiki 814-693-9390

**EPHRATA**

Ephrata Public Library, 550 S Reading Rd; Tues 4-8 pm, Brandon Keath 717-733-9657

**ERIE**

Zurn Science Building, W 7th St between Peach and Sassafra, Room 348; Fri 6:30-10 pm, James Walczak 814-870-7763

**GLADWYNE**

Main Line CC; Waverly Hts Ret Comm Game Room, 1400 Waverly Rd; Tues 7 pm, Dan Heisman 610-649-0750

**HARRISBURG**

West Shore YMCA, 410 Fallowfield Rd, Camp Hill; Mon 7-10 pm, Brian Sheinfeld 717-761-3151

**HATBORO**

Chaturanga CC; Trinity Orthodox Presbyterian Church, County Line Rd W of Blair Mill Rd; Thurs 8 pm, 215-794-8368

**HAZLETON**

Greater Hazleton CC; Zola's Lamp Post, Rt 940; Tues &amp; Thurs 8-11 pm, Bob Brubaker 570-384-4122

**HUNTINGDON VALLEY**

Huntingdon Valley Chess Society Juniors; Huntingdon Valley Library, 625 Red Lion Rd; Tues 7:30-8:30 pm

**JOHNSTOWN**

Starbucks, 109 Town Centre Dr; Tues 7-8:30 pm, 814-467-9759

**LANCASTER**

Rodney Park, Crystal &amp; Rodney St; Wed 6:30-9 pm, 717-892-6612

**LANSDALE**

North Penn CC; St John's UCC Church, Main and Richardson Sts; Fri 7 pm-1 am, 215-699-8418

**LEBANON**

Library, 125 N 7th St; Wed 6-8 pm, Rene 717-279-7030

**MAHONEY CITY**

Library, 19 W Mahanoy St; Sat Noon-2 pm, Tom 570-773-3250

**MONROEVILLE**

Borders, 200 Mall Blvd; Wed 6:30-9:30 pm, Tom Magar 412-823-4493

**MURRYSVILLE**

First Presbyterian Church, 3202 N Hills Rd; Wed 7-11 pm, Jay 724-325-2484

**NEW CASTLE**

Lawrence County CC; Moose Lodge, 29 S Mercer St; Thurs 6:30-9 pm

**PECKVILLE**

Valley Community Library, 739 River St (Rt 247); Sat 1-4 pm, 570-487-1125

**PETERS TOWNSHIP**

CRC, Peterswood Park, 700 Meredith Dr; Wed 6-7 pm, Eric 412-221-2394

**PHILADELPHIA**

- (1) FMCC; 2012 Walnut, Lower Level; Mon-Thurs 1-9 pm, Fri & Sat 1-Midnight, 215-496-0811  
 (2) Univ of Penn CC; Chats Cafeteria, 3800 Locust; Wed 8 pm  
 (3) Masterminds CC; Fountains @ Logan Square East, 2 Franklin Town Blvd; Wed & Fri 7-10 pm, Steve Slocum 215-455-6285  
 (4) Jardel Recr Center, 1400 Cottman, Thurs 6:30-9:30 pm, Sat Noon-4 pm  
 (5) Drexel Univ CC; Creese Student Center, Bookstore Lobby, Wed 5-8 pm

**PITTSBURGH**

- (1) Univ of Pitt CC; William Pitt Union; Tues & Thurs 7-11 pm, 412-908-0286  
 (2) Pittsburgh CC; Wightman School Community Center, 5604 Solway St; Wed 1-9 pm, Sat Noon-10 pm, 412-421-1881  
 (3) Crafton Public Library, 140 Bradford; Sat 9-Noon, 412-922-4234  
 (4) Hill Branch Library, 419 Dinwiddie St; Mon & Thurs 3-7 pm, Sat 1-5 pm, 412-361-6170  
 (5) CMU CC; University Center Commons; Thurs 6-8 pm  
 (6) Duquesne Univ; Union Bldg; Wed 3-6 pm & Fri 7:30 pm, Stanislav Kanev 412-867-9867

**READING**

Million Youth Chess Club; Mike 610-373-3061

**RIDLEY PARK**

Ridley Park United Methodist Church, 15 E Dupont St; Mon 6:15-11 pm, 610-586-8205

**SCRANTON**

Northern Light Espresso Bar, 536 Spruce St; Sun 3-7 pm, Mike Evancavich 570-903-4031

**SHAMOKIN**

Shamokin CC; Mon 7 pm, Don Myers 570-648-8681

**SHIPPENSBURG**

Shippensburg Public Library, 73 W King St; Wed 6:30 pm, 717-477-0645

**STATE COLLEGE**

- (1) PSU CC; ASI Bldg, Room 16; Thurs 7 pm  
 (2) Schlow Library, 211 South Allen St; Sat 1:45-4:45 pm, 814-571-9629

**STROUDSBURG**

YMCA, Main St; Thurs 7-11 pm, Eric 570-476-8939 or Jim 717-992-5475; &amp; Loder Senior Center, 62 Analomink St, East Stroudsburg; Tues 7-11 pm

**SWARTHMORE**

121 Park Ave; Sat 7-9 pm

**VANDERGRIFT**

St Paul's Lutheran Church, 714 Wallace St; Mon 6-9 pm, 724-567-6580

**WARMINSTER**

WREC, 1101 Little Ln; Tues 6:30-8 pm, 215-443-5428

**WASHINGTON**

1st Lutheran Ch, 92 West Walnut St; Thurs 8:30-11:30 pm, 724-743-4350

**WEST CHESTER**

- (1) West Chester CC; United Methodist Ch, High & Barnard Sts; Thurs 7 pm  
 (2) WC Univ CC; Sykes Student Building; Thurs 5 pm

**WYNCOTE**

Montgomery Youth CC; Calvary Presbyterian Church, 217 Fernbrook Ave; Wed 7-8:30 pm, Steve McLaughlin 215-784-5938

**YORK**

York Emporium, 343 West Market St; Thurs 6-9 pm, 717-845-9368

<http://www.pscfchess.org/clubs/>